



Enterprise Florida Overview

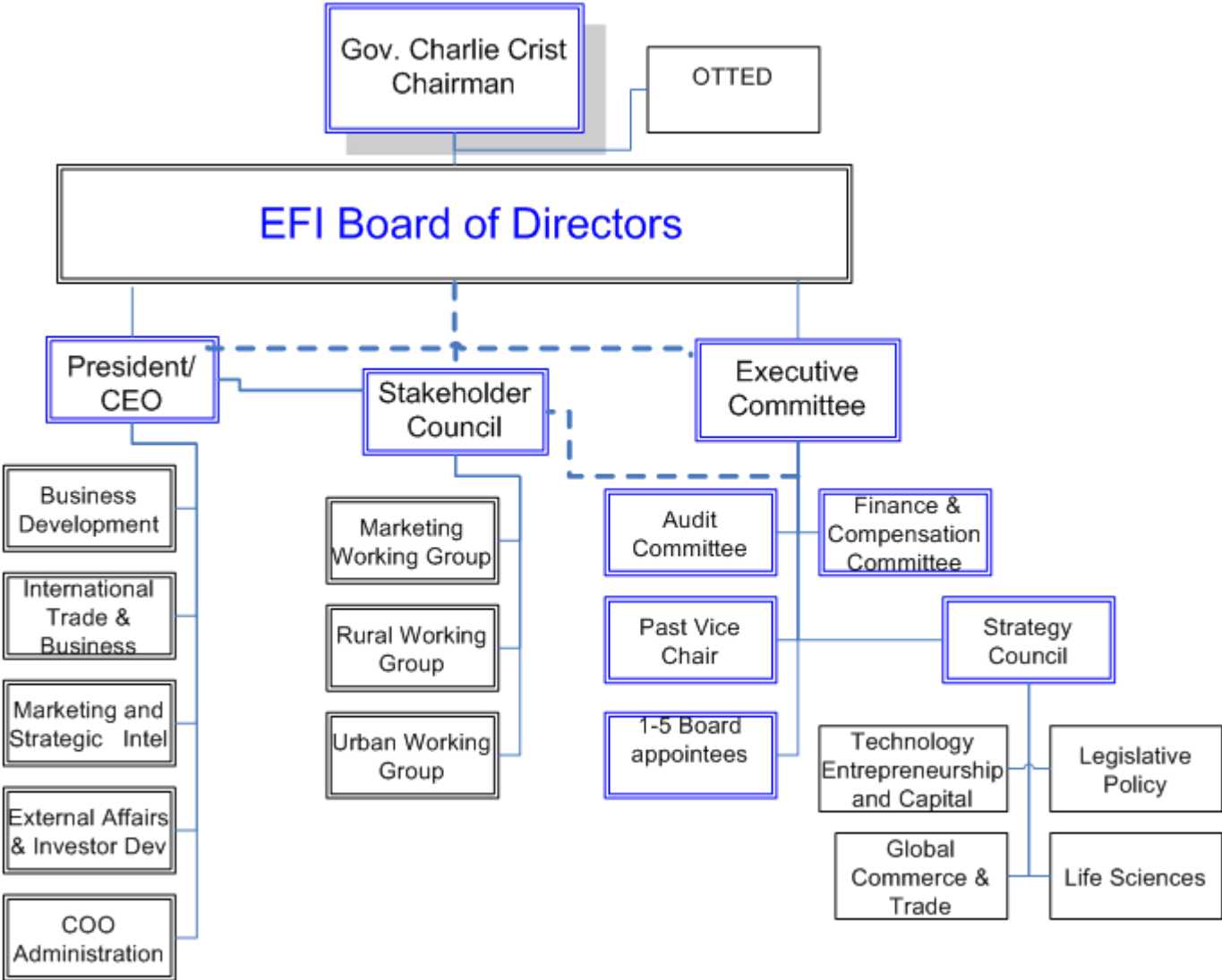
About Enterprise Florida, Inc. (EFI)

Florida's principal economic development organization. Public-private partnership, **not-for-profit 501(c)(3) corporation**. The Chairman is Governor Crist.

Responsible for:

- Creating **high wage jobs**
- Global **branding**
- Promoting **exports**
- Inbound **investment**, foreign (FDI) and domestic
- **Increasing economic opportunities** for Florida's citizens and businesses

Enterprise Florida Governance



EFI Locations





Enterprise Florida, Inc. (EFI)

Responsible for:

- Creating high wage jobs
- Global branding
- Promoting exports
- Inbound investment, foreign (FDI) and domestic
- Increasing economic opportunities for Florida's citizens and businesses

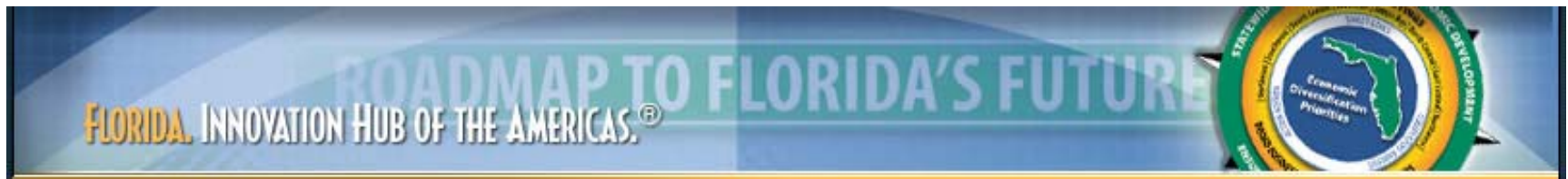
Coordinates the Roadmap to Florida's Future statewide Strategic Plan:

The Roadmap to Florida's Future drives economic development policy-making statewide.

- The Roadmap is mandated by Legislature
- Five-year strategic plan for economic development
- Lists key priorities to diversify Florida's economy for global competitiveness
- Every 3 year Strategic plan is updated

Strategic Plan was updated January 2010

www.eflorida.com





Enterprise Florida Programs

- Marketing Florida as a premier business location
- Business recruitment & retention
- State incentive coordination
- Trade development for Florida businesses
- Focus on targeted geographic areas
- Focus on industries to diversify and strengthen Florida's economy



Sectors Targeted

- **Life Sciences**
- **Information Technology**
- **Aviation / Aerospace / Space**
- **Homeland Security / Defense**
- **Financial / Professional Services**
- **Manufacturing**
- **Clean Energy**
- **Emerging Technologies**

1 Key to Success = Partnerships



Baker County Chamber of Commerce - Economic Development Partnering with EFI:

- \$40 million Investment
- 800 Direct Jobs
- Qualified Target Industry Tax Refund
- Community Development Block Grant
- Rural Infrastructure Fund
- Quick Response Training



Clay County Chamber of Commerce - Economic Development Partnering with EFI:

- 10 new direct jobs 2 retained jobs
- \$1M taxable investment
- 160% County Average Annual Wages
- Quick Action Closing Fund
- Qualified Target Industry Tax Refund



Flagler County Enterprise Flagler Partnering with EFI:



- 700 New Jobs-1000 Retained
- 30 New Jobs- 25 Retained
- Quick Response Training Grant
- Qualified Target Industries Tax Refund



Cornerstone & Jacksonville Economic Development Commission

Partnering with EFI:

- 279 Direct jobs, \$200 M Taxable Investment
- Quick Resposne Trainng Grant
- Qualified Target Industry Tax Refund
- Brownfield Bonus
- Capital Investment Tax Credit
- Quick Action Closing Fund
- City of Jacksonville Site Cost Write-down
- City of Jacksonville ED Grant

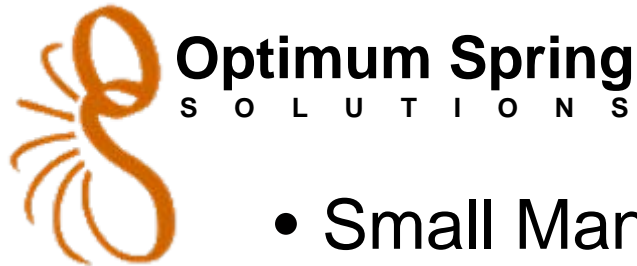


Nassau County Economic Development Board Partnering with EFI:

- 26 direct jobs with \$2.095M taxable investment
- Quick Response Training Grant (\$108,000)
- Qualified Target Industry Tax Refund



St. Johns County Chamber of Commerce EDC - Partnering with EFI:



- Small Manufacturing Company
- EFI Jacksonville Office Facilitates Export Opportunities
 - South Africa
 - Mexico
 - Canada
 - Adds Support to Current Korean Connection
- Creates Rapid Growth
 - Looking for larger facility
 - Adding jobs



Economic Development Council



Did you know.....

- State to State comparison reports
- City to City comparison reports
- Monthly, quarterly and annual economic statistics
- International trade and investment data
- Statistics on Florida's key industries
- Maps and multimedia materials about Florida

www.eflorida.com/knowledgecenter