

# Reality Check First Coast



Baker  
Clay  
Duval  
Flagler  
Nassau  
Putnam  
St. Johns

*Seven Strong, One Vision*

## Existing Conditions in LEGOs®

(A Short Story on how Reality Check First Coast is actually getting it done...)

**Margo Moehring**

Northeast Florida Regional Council



## *Once Upon a Time...*

- There were a bunch of committees and over 65 volunteer members that enjoy solving problems
- They got inspired by the possibilities of Reality Check First Coast
- Some of them thought LEGO® analysis, because of accessibility of using LEGO® bricks, would be cool
- They started an Analysis Subcommittee, and have met every week or every other week since last fall

# Reality Check First Coast

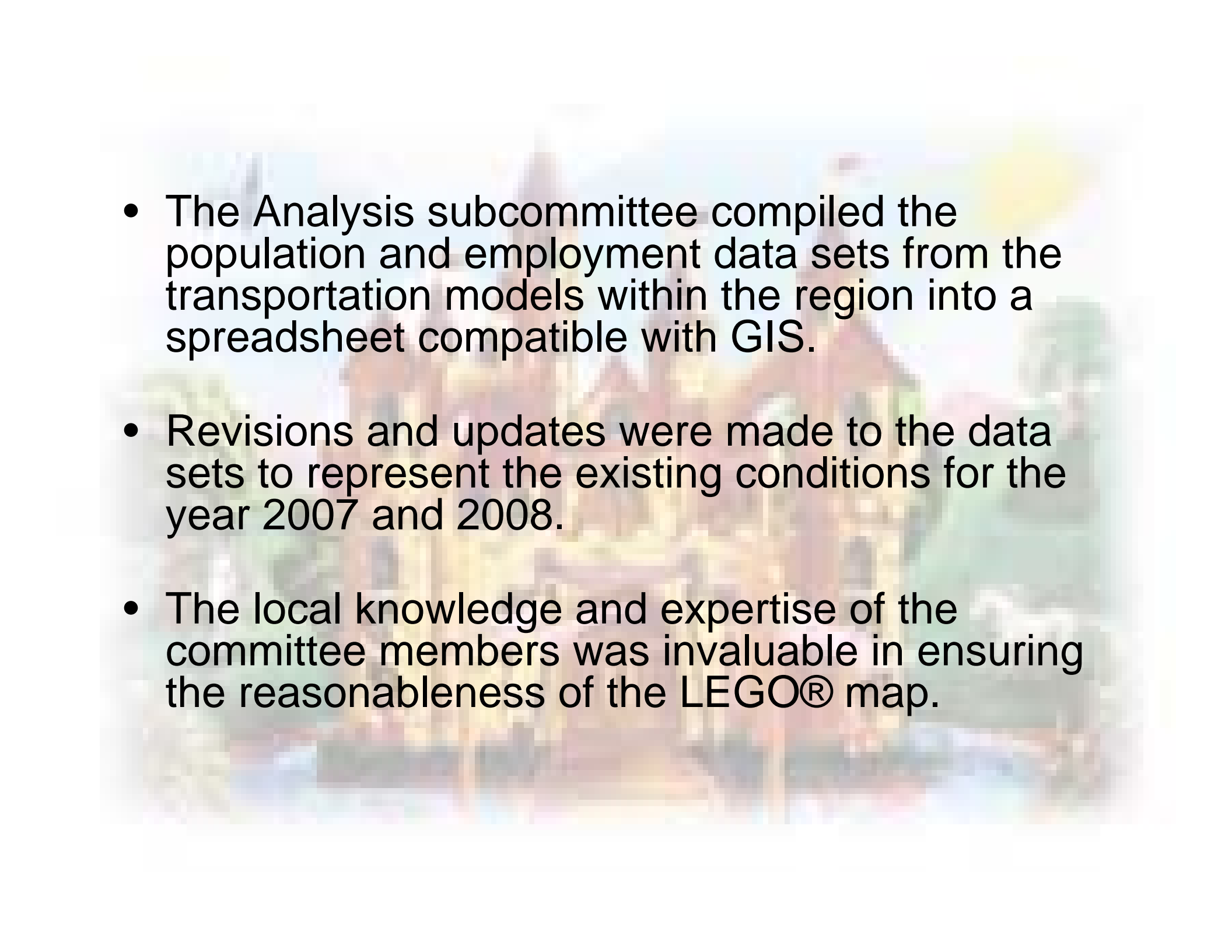


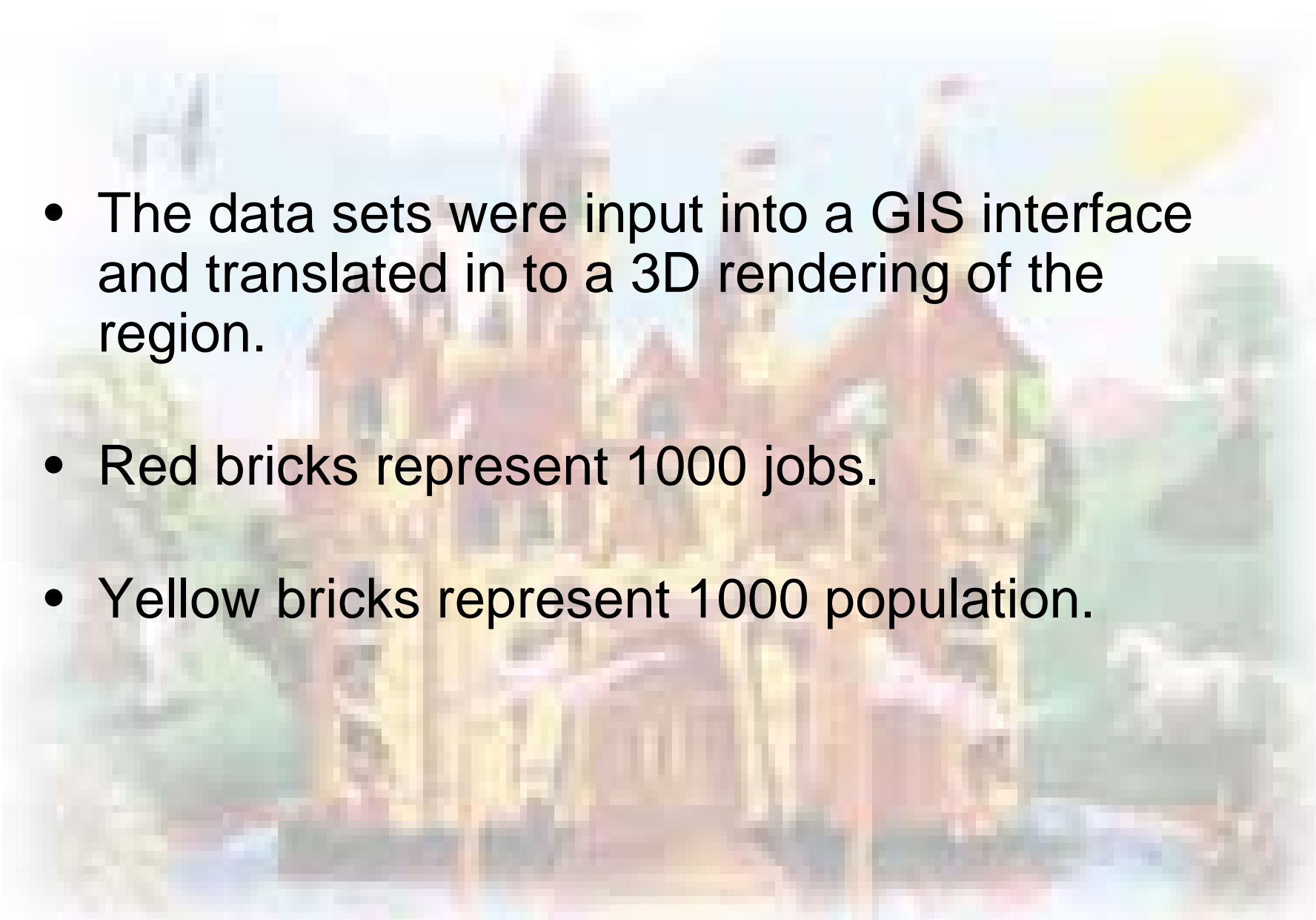
# *Data/Mapping Committee*

- Guidebook
- Rules of the Game
- Maps
- Analysis methodology
- Participant Polling
- Scenario review
- Afternoon presentation

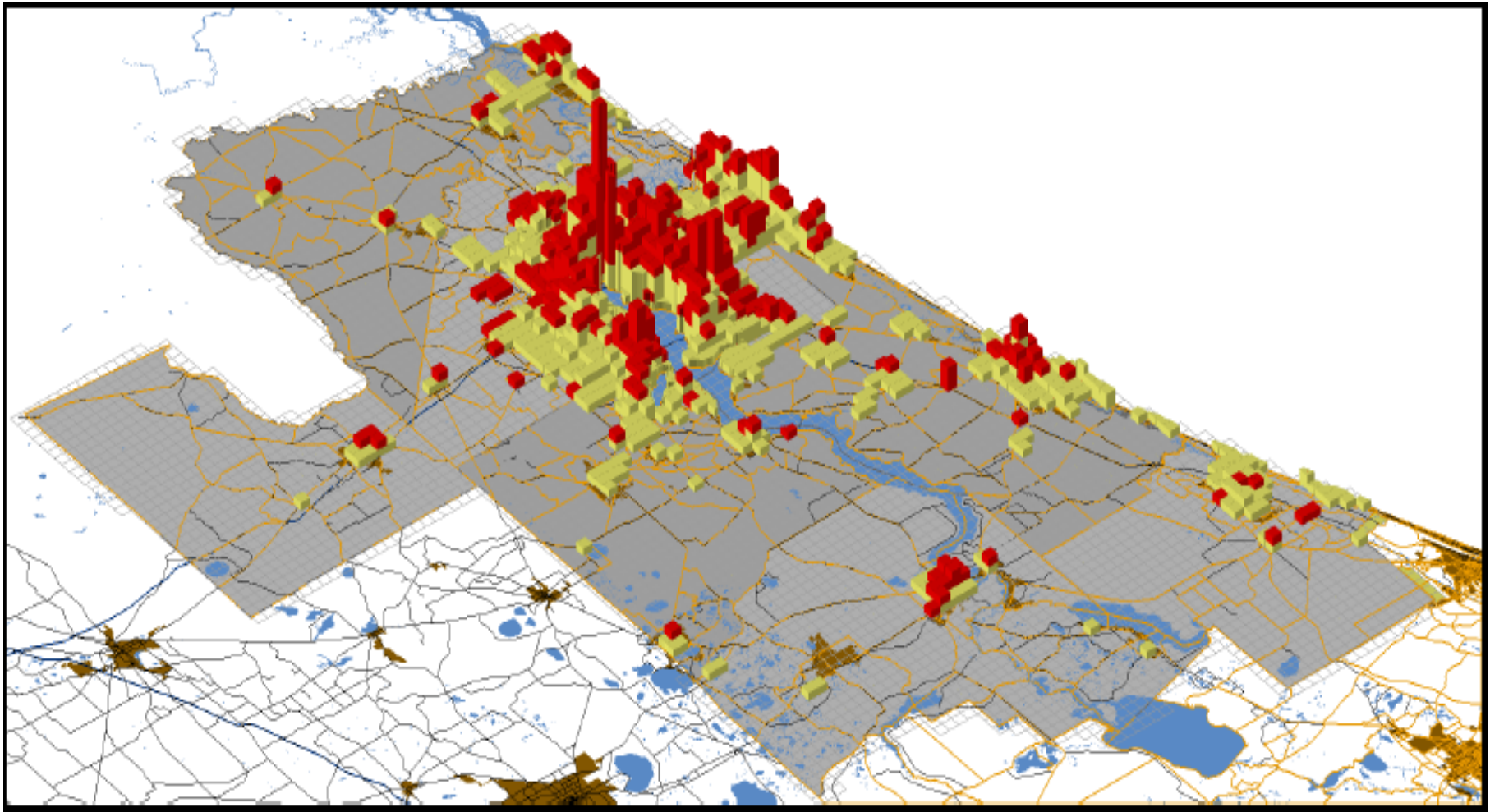
# *Analysis Subcommittee*

- **Members**
  - Ken Crevling, Urbanomics
  - Susan Fraser, SLF Inc.
  - Terry Shaw, HNTB
  - Aage Schroder, Mactec
  - Richard Prindiville, FDOT
  - James Boyle, JTA
  - John Palm, RS&H
  - Kristy Capobianco, RS&H (GIS)
- All donating their time and their talents

- 
- The Analysis subcommittee compiled the population and employment data sets from the transportation models within the region into a spreadsheet compatible with GIS.
  - Revisions and updates were made to the data sets to represent the existing conditions for the year 2007 and 2008.
  - The local knowledge and expertise of the committee members was invaluable in ensuring the reasonableness of the LEGO® map.

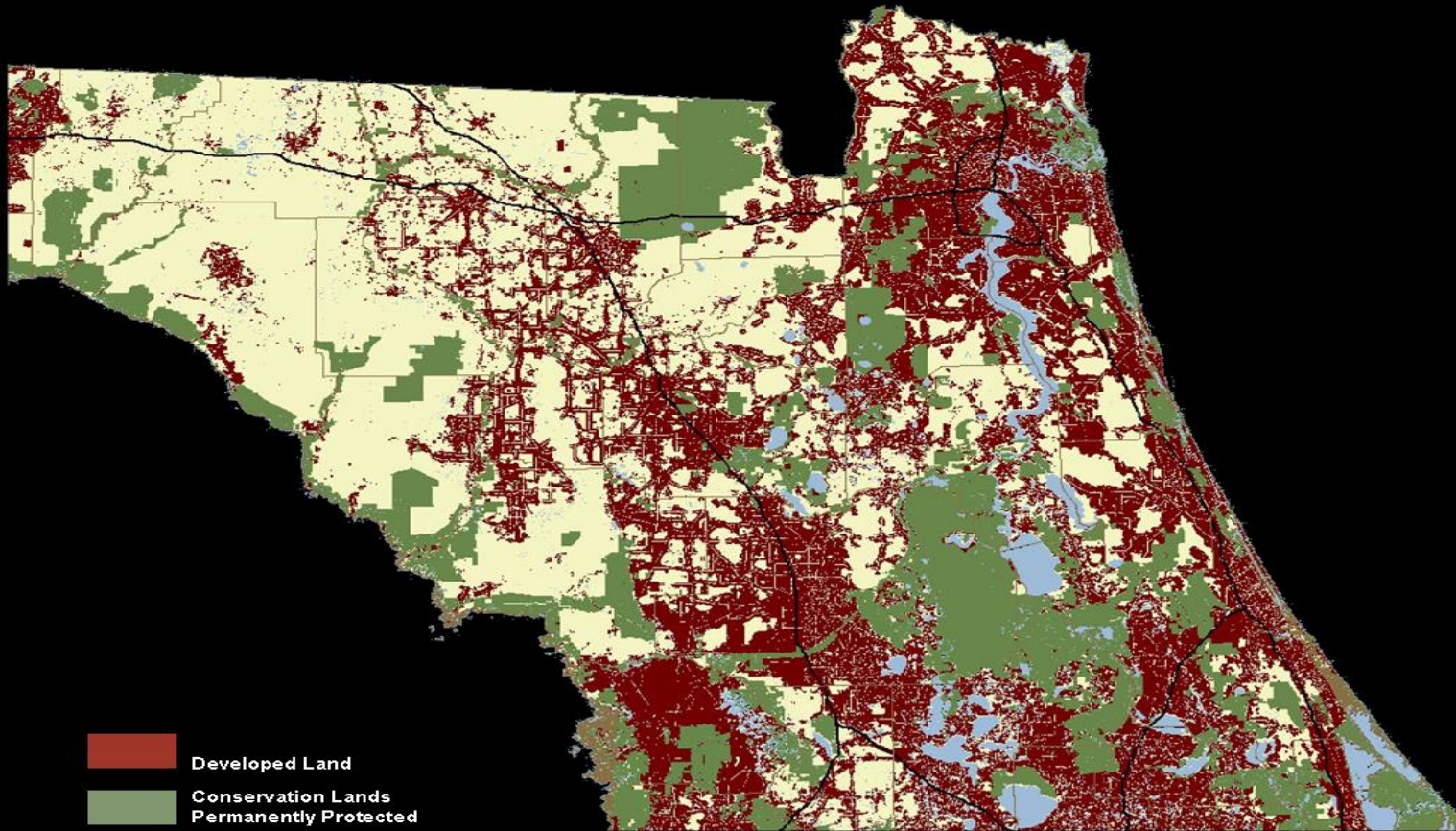
- 
- The data sets were input into a GIS interface and translated in to a 3D rendering of the region.
  - Red bricks represent 1000 jobs.
  - Yellow bricks represent 1000 population.

# *Existing Conditions Map*



# *Next Challenge?*

2060 Developed Lands and Permanent Conservation Lands



Florida 2060: A Research Project of 1000 Friends of Florida



*And they all lived  
happily ever after!*

And the moral of the story is...

**Be very nice to Reality Check  
First Coast Volunteers!**