

# NEFRC

## Highlights

Monthly Report of the Northeast Florida Regional Council

March 2016

### NEFRC Welcomes New Board Members

In January 2016, the Northeast Florida Regional Council gained eight new Board Members. We welcome each one of them and look forward to their new ideas and participation in advancing the Regional agenda. For more information, please contact Brian Teeple, [bteeple@nefrc.org](mailto:bteeple@nefrc.org)



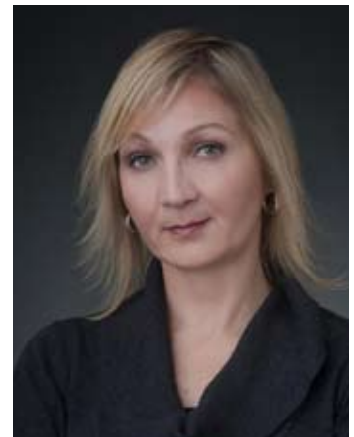
Mr. Michael Bourre  
representing  
Clay County



Mr. Doug Conkey  
representing  
Clay County



Mr. John Drew  
representing  
Nassau County



Ms. Helga Van Eckert  
representing  
Flagler County



Mr. Curtis Hart  
representing  
Department Economic  
Opportunity



Hon. Larry Harvey  
Putnam County  
Commissioner



Hon. Len Kreger  
Nassau County  
Commissioner



Mr. Ronald "Ron" Timonere  
representing  
Duval County

Follow the Northeast Florida Regional Council



Bringing Communities Together to Advance the Regional Agenda

## Putnam County Housing Fair

Ed Preston, NEFRC's new Director of Planning Programs, was invited by Jay Roberts of the North Florida Community Action Agency to represent the State Housing Initiative Partnership Program (SHIP) to interested residents of Crescent City and south Putnam County. The Housing Fair was held on Friday, March 11 and was hosted at the Women's Center by an organization named "Interested Citizens". Many citizens attended, to gather information about available programs and to express their needs for housing in the County. For more information on the SHIP program, please contact Ed Preston, [epreston@nefrc.org](mailto:epreston@nefrc.org).



## Energy to Change the World

The third class of the Regional Leadership Academy was hosted by the Jacksonville University Public Policy Institute at the Marine Science Research Institute (MSRI). The morning session focused on energy issues, with a panel of experts moderated by Rick Mullaney, Executive Director of the Public Policy Institute. After a tour of the MSRI led by Dr. Quinton White, NEFRC CEO Brian Teeple moderated a panel of distinguished regionalists, all of whom have run for office. It was a lively and informative day. For more information, please contact Margo Moehring, [mmoehring@nefrc.org](mailto:mmoehring@nefrc.org).



*From left to right: Richard Mullaney, Esq., Director, JU Public Policy Institute, Art Graham, Florida Public Service Commission, Bill Bishop, Vice President, Akel, Logan, Shafer PA, and Milissa Holland, Candidate for Mayor, City of Palm Coast*

## Statewide Training for All Regional Planning Councils

A two-day training was held for staff of the ten Regional Planning Councils on using sea level rise tools to conduct vulnerability assessments. This training is Task 1 in the Trainers and Tools: Building Coastal Flood Hazard Resiliency in Florida's Regional Planning Council Communities Grant, which aims to promote the translation of science to policy and risk preparedness in Florida communities by increasing understanding of, access to, and utilization of a range of existing tools. This Project will enhance communities' understanding of coastal vulnerability by increasing Regional Planning Councils' capacity to train and provide technical assistance regarding the use of coastal flood hazard tools and associated techniques. This coordinated effort at the state and regional level will educate and promote use of coastal flood hazard assessment tools. For more information, please contact Beth Payne, [epayne@nefrc.org](mailto:epayne@nefrc.org)

