

NORTHEAST FLORIDA REGIONAL COUNCIL HighLights

Bimonthly Report of the Northeast Florida Regional Council

August/September 2018

Regional Leadership Academy Graduation

The Regional Leadership Academy (RLA) graduated its thirteenth class on September 24th, putting its number of graduates at 254 regional leaders. The Academy's mission is to build a strong, diverse regional network of leaders with a shared commitment to collaboration and to connecting our communities to make Northeast Florida a better place to live and work. When a class graduates from RLA, they become members of the Regional Community Institute, the policy "think tank" that works with the Northeast Florida Regional Council. The program covers regional demographics, growth management, equity, environment, resources and the full range of issues currently affecting Northeast Florida. Curriculums change each year to recognize changing times. For more information regarding RLA, contact Margo Moehring at mmoehring@nefrc.org.



RLA Graduates left to right: Matthew Schellhorn, Jeff Rawls, Kelly Gibson, Cheryl Owen, Melissa Long, Valerie Williams, Kaitlyn Dietz, Colin Murphy, Adam Mengel, Rebecca Vanderbeck, Kathy Curry, Mike Pattison, Victor Cora and Edward Perez.

Also photographed is NASJax Base Commander Michael Conner along with NEFRC staff

NEFRC Accepting Nominations for Regional Awards for Excellence

The Northeast Florida Regional Council has announced the December 6, 2018 Northeast Florida Elected Officials Luncheon and Regional Awards for Excellence. The Awards Program is designed to recognize Regional Excellence in a variety of critical arenas essential to positioning our Regional Community as a model of cooperation and coordination. This recognition program is anchored by the Northeast Florida Regional Council Regional Leadership Award. Nominations are due by October 12, 2018. Northeast Florida communities, residents and businesses are encouraged to complete the brief nomination form to bring recognition to deserving individuals, entities, and projects that make our Northeast Florida a wonderful place to call home. For more information, contact Brian Teeple at bteeple@nefrc.org. Nomination forms are on-line at [http://www.nefrc.org/WiP/PDFs/Misalliance-items/EOL/EOR_Introductions_and_Form_\(online\).pdf](http://www.nefrc.org/WiP/PDFs/Misalliance-items/EOL/EOR_Introductions_and_Form_(online).pdf).

Interstate Coordination with Georgia Partners

Water issues are universal and boundaries need not be barriers. Northeast Florida Regional Council (NEFRC) staff and members of the Water Committee of the Regional Community Institute recently convened in early August at the Coastal Regional Commission of Georgia to address action items in the Water Beyond Borders Report. Of particular focus was interstate coordination on regional steps that will help protect the St. Mary's River. The afternoon was rounded out by a visit to Waterways, a low impact development-focused community in Richmond Hill, Georgia being built by Fletcher Davis Company. There, CEO Doug Davis gave the group a vehicle tour of the neighborhood's amenities and explained the principles of conservation and place-making that guide their development philosophy. For more information on Water Beyond Borders, contact Aaron Glick at aglick@nefrc.org.



NEFRC Staff, Doug Davis, RCI Board Member Dr. Quinton White, and Jacksonville University Graduate Student, Jennifer Hess Johns

Follow the Northeast Florida Regional Council



Bringing Communities Together to Advance the Regional Agenda

Preparing Businesses for Disaster in St Johns County

The Northeast Florida Regional Council (NEFRC) partnered with the St. Johns County Chamber of Commerce, St. Johns County Government, and the International Economic Development Council (IEDC) to offer a series of free business continuity training workshops in St. Johns County on August 20th. The program was made possible by a grant funded through the Economic Development Administration (EDA). Gail Moraton, Business Resiliency Manager with the Insurance Institute for Business & Home Safety (IBHS) was the lead presenter at both sessions. Ms. Moraton presented vital information for businesses to prepare for sustainability before, during, and after any emergency, including a hurricane. Participants were treated to a tour of the St. Johns County Emergency Operations Center after the seminars. Refreshments were sponsored by Central Security Agency. Additional workshops are being contemplated for other counties in the region during the coming year. For more information on Business Continuity Workshops, contact Aaron Glick at aglick@nefrc.org.



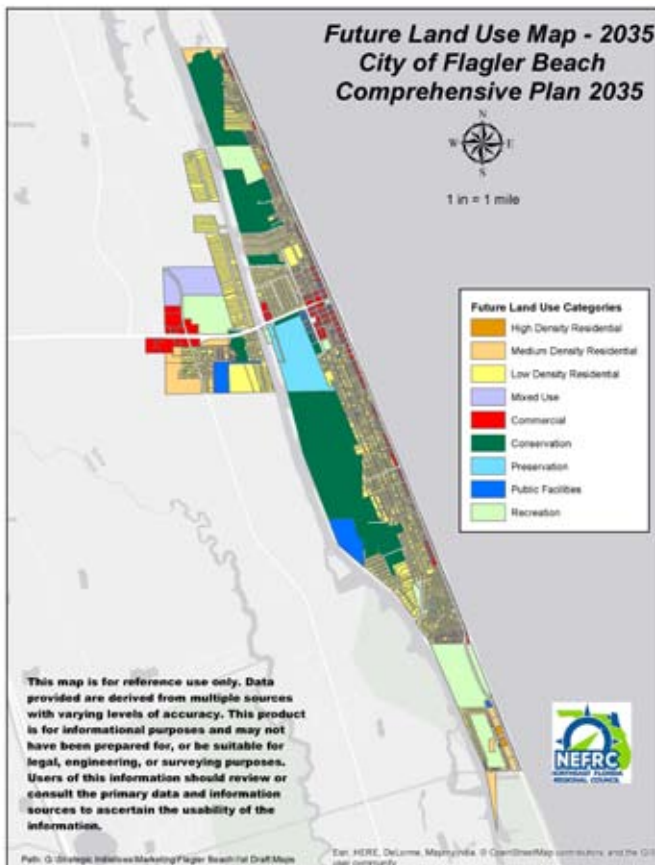
Expertise in business resiliency was shared by presenter Gail Moraton.



Aaron Glick describes the methodology behind the Resilient Flagler County Plan to the TPO Board.

Resilient Flagler County Plan Presented

The Northeast Florida Regional Council (NEFRC) presented the Resilient Flagler County Plan to the River to Sea Transportation Planning Organization (TPO) Board and subcommittees on August 21st and 22nd. The Plan examines several possible scenarios where sea level rise plus storm surge is projected to impact critical infrastructure and significant roadways in Flagler County. NEFRC partnered with the UF GeoPlan Center to analyze the coastal portions of Flagler County east of Interstate 95. The model and resulting plan provides a crucial first step for stakeholders to begin a wider discussion on where and how future investments in vulnerable infrastructure should take place. For more information on the Resilient Flagler County Plan, contact Margo Moehring at mmoehring@nefrc.org.



Flagler Beach Comprehensive Plan Update

The Northeast Florida Regional Council has been working closely with the City of Flagler Beach to complete an update of their 2035 Comprehensive Plan. Staff presented the completed plan and maps to the Planning and Architectural Review Board at meetings in August, September and October in Flagler Beach Town Hall. The next step is for the Plan is to be adopted by the City of Flagler Beach City Commission. For more information on the Flagler Beach Comprehensive Plan Update, contact Margo Moehring at mmoehring@nefrc.org.



The 2035 Comprehensive Plan is presented to the public and members of the Planning & Architectural Review Board.