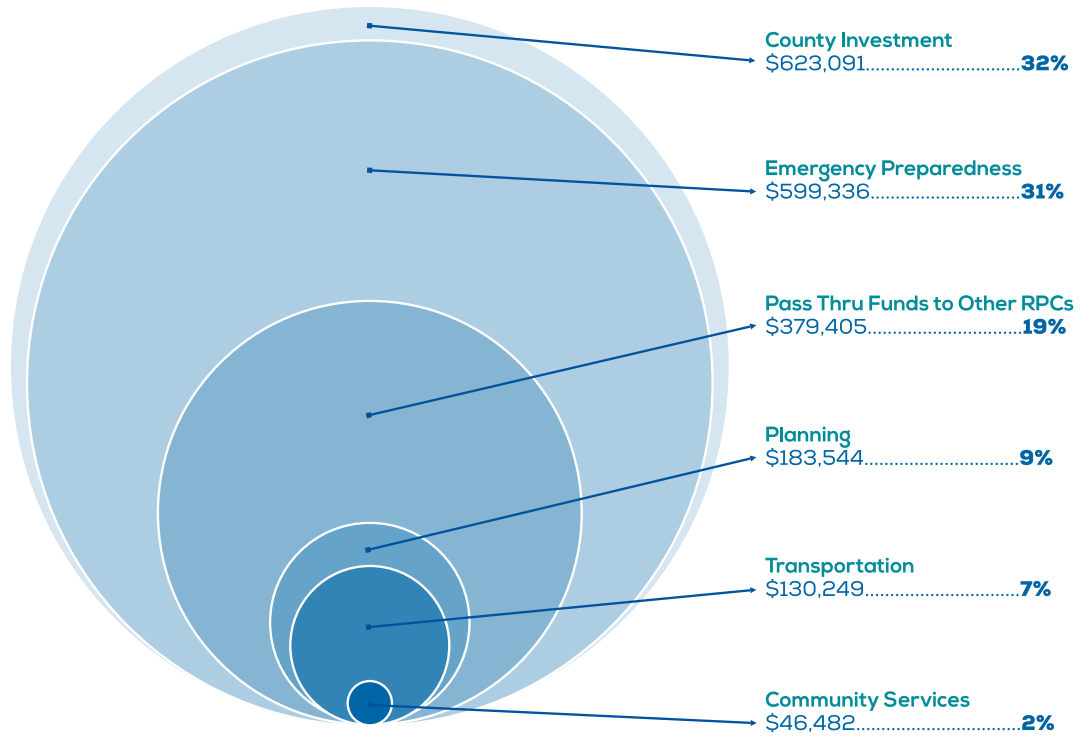


Northeast Florida Regional Council 2015 ANNUAL REPORT

Serving the counties of Baker, Clay, Duval, Flagler, Nassau, Putnam, and St. Johns

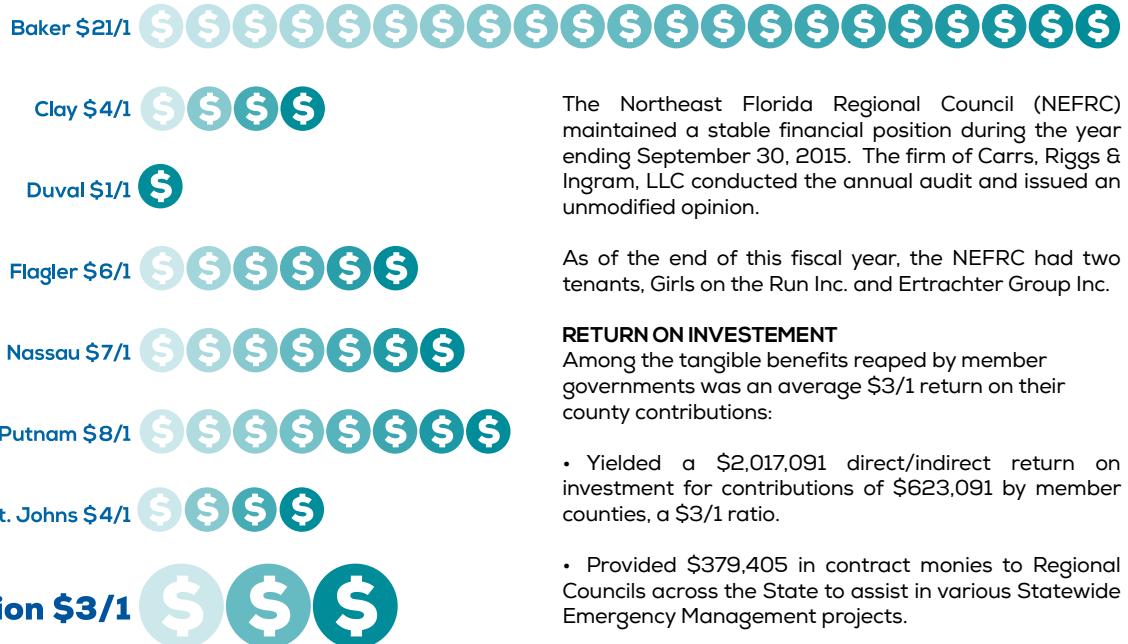
Bringing Communities Together to Advance the Regional Agenda

Revenue Sources - FY 2014-2015



Total Revenues - FY 2014-2015
\$1,962,108.....100%

Counties' Return on Investment



The Northeast Florida Regional Council (NEFRC) maintained a stable financial position during the year ending September 30, 2015. The firm of Carrs, Riggs & Ingram, LLC conducted the annual audit and issued an unmodified opinion.

As of the end of this fiscal year, the NEFRC had two tenants, Girls on the Run Inc. and Ertrachter Group Inc.

RETURN ON INVESTMENT

Among the tangible benefits reaped by member governments was an average \$3/1 return on their county contributions:

- Yielded a \$2,017,091 direct/indirect return on investment for contributions of \$623,091 by member counties, a \$3/1 ratio.

- Provided \$379,405 in contract monies to Regional Councils across the State to assist in various Statewide Emergency Management projects.



The Region \$3/1

Our Mission

To be a dynamic network of local governance, providing visionary leadership, advocacy, and coordination between counties and local, state and federal governmental agencies to preserve and enhance the quality of Northeast Florida's economic, natural, built and social environment by:

- Actively serving as a convener of regional issues
- Fostering public awareness of diverse regional issues
- Identifying trends, issues and opportunities for the Region
- Building consensus for Regional solutions through coordination and cooperation
- Providing a regionally focused forum for comprehensive and functional planning
- Furnishing technical and administrative assistance to local governments and other stakeholders, and

Maintaining expertise among staff and pursuing technologies that support the successful implementation of the mission.



BAKER COUNTY
County Seat: Macclenny
Population: 26,881
Land Area (sq. miles): 585
Other Incorporated
Communities: Glen St. Mary
Established: 1861
Named for: James McNair Baker, Confederate States senator and Florida judge



CLAY COUNTY
County Seat: Green Cove Springs
Population: 192,843
Land Area (sq. miles): 601
Other Incorporated
Communities: Keystone Heights, Orange Park, Penney Farms
Established: 1858
Named for: Kentuckian Henry Clay, Secretary of State under John Quincy Adams



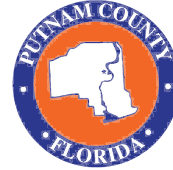
DUVAL COUNTY
County Seat: Jacksonville
Population: 876,075
Land Area (sq. miles): 774
Other Incorporated
Communities: Atlantic Beach, Baldwin, Jacksonville Beach, Neptune Beach
Established: 1822
Named for: William Pope Duval, first territorial governor of Florida



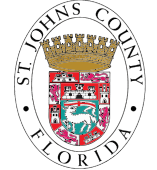
FLAGLER COUNTY
County Seat: Bunnell
Population: 97,483
Land Area (sq. miles): 485
Other Incorporated
Communities: Beverly Beach, Flagler Beach, Marineland, Palm Coast
Established: 1917
Named for: Henry Flagler, developer of the Florida East Coast Railroad



NASSAU COUNTY
County Seat: Fernandina Beach
Population: 74,661
Land Area (sq. miles): 652
Other Incorporated
Communities: Callahan, Hilliard
Established: 1824
Named for: Nassau Sound



PUTNAM COUNTY
County Seat: Palatka
Population: 72,605
Land Area (sq. miles): 722
Other Incorporated
Communities: Crescent City, Interlachen, Pomona Park, Welaka
Established: 1849
Named for: Benjamin Alexander Putnam (1801-69), lawyer, soldier, judge, state legislator, first president of the Florida Historical Society



ST. JOHNS COUNTY
County Seat: St. Augustine, oldest permanent settlement in U.S.
Population: 201,541
Land Area (sq. miles): 609
Other Incorporated
Communities: Hastings, St. Augustine Beach
Established: 1821
Named for: St. Johns River

2014-2015 Board Of Directors



Mr. Kenny Eubanks
President
Putnam County



Mr. Vernon Myers
1st Vice President
Putnam County



Hon. Cyndi Stevenson
2nd Vice President
St. Johns County



Mr. Darryl Register
Secretary/Treasurer
Baker County

The Board of Directors of the Northeast Florida Regional Council is comprised of 35 members: two-thirds elected officials and one-third gubernatorial appointees. These individuals are recognized in the public and private sectors for their influence and leadership. They provide the Council with the insight and the tools to make critical decisions which affect the quality of life within our Region. The members named below are listed by their affiliation and title reflective of their status at the time of their service.

BAKER COUNTY

Hon. Jimmy Anderson
Baker County
Commissioner

Mr. Darryl Register
Gubernatorial
Appointee

Hon. James Bennett
Baker County
Commissioner

Mr. Michael Griffis
City of Macclenny
Representative

CLAY COUNTY

Hon. Tony Brown
Mayor
City of Keystone Heights

Hon. Wendell Davis
Clay County
Commissioner

Hon. Gavin Rollins
Clay County
Commissioner

DUVAL COUNTY

Ms. Elaine Brown
Gubernatorial
Appointee

Hon. Katrina Brown
Jacksonville City Council

Hon. Al Ferraro
Jacksonville City Council

Hon. Stan Totman
Mayor
Town of Baldwin

FLAGLER COUNTY

Hon. Frank Meeker
Flagler County
Commissioner

Hon. Jon Netts
Mayor
City of Palm Coast

Hon. Catherine Robinson
Mayor
City of Bunnell

Mr. Bob Sgroi
Gubernatorial
Appointee

NASSAU COUNTY

Mr. Aaron Bell
Gubernatorial
Appointee

Hon. Ed Boner
Mayor
City of Fernandina Beach

Hon. George Spicer
Nassau County
Commissioner

Mr. Robert "Bob" Spaeth
Nassau County
Representative

PUTNAM COUNTY

Mr. Kenny Eubanks
Putnam County
Representative

Mr. Vernon Myers
Representative
City of Palatka

Mr. Jeovanny Palencia
Gubernatorial
Appointee

Hon. E. Walton Pellicer II
Putnam County
Commissioner

ST. JOHNS COUNTY

Hon. Roxanne Hovalth
City of St. Augustine
Commissioner

Hon. Cyndi Stevenson
St. Johns County
Commissioner

Mr. Harlan Mason
Gubernatorial
Appointee

Hon. James Johns
St. Johns County
Commissioner

Hon. Bill McClure
St. Johns County
Commissioner

EX-OFFICIO NON-VOTING MEMBERS

Mr. Geoffrey Sample
St. Johns River Water
Management District

Mr. Larry Parks
Florida Department of
Transportation

Mr. Gregory Strong
Florida Department of
Environmental Protection

Training & Preparedness

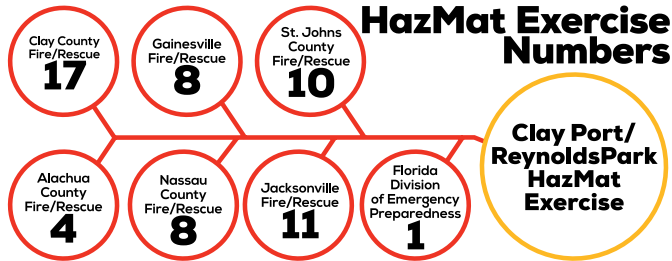
465 people trained in the region.

Local Emergency Planning Committee (LEPC)

The Northeast Florida Local Emergency Planning Committee is a group of hazardous materials professionals that work on preparedness issues such as hazmat training & exercises, public outreach and education, and technical assistance for facilities with chemical inventories.

- "Kids in Danger Zones,"
- 3-year hazmat training and exercise calendar
- Regional HazMat Exercise

LEPC Regional HazMat Exercise - The District 4 Local Emergency Planning Committee (LEPC) conducted a full-scale hazardous materials exercise at the Clay Port/Reynolds Park in Green Cove Springs.



Local Mitigation Strategy

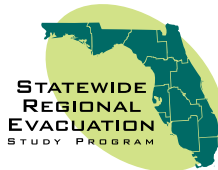
Council staff completed the update to the Clay County Local Mitigation Strategy (LMS). An LMS is a long-term strategy to reduce the community's vulnerability to natural disasters.



The LMS was approved by the Florida Division of Emergency Management in July 2015. The document was adopted by the County and its municipalities of Green Cove Springs, Keystone Heights, Orange Park, and Penney Farms in the months following.

Statewide Regional Evacuation Study Program

The Northeast Florida Regional Council coordinated the statewide update. New evacuation transportation models were run for each region. The output of these models included updated clearance times, evacuating population figures and shelter demand numbers for each County.



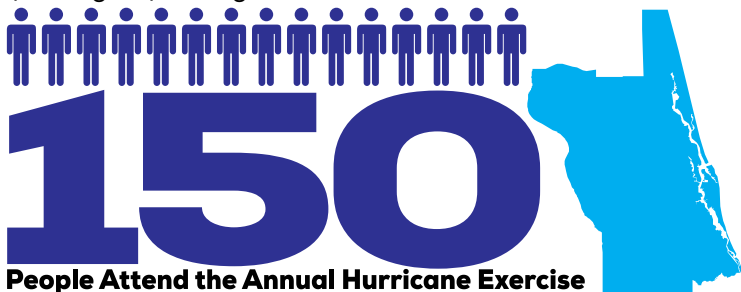
Exercises

2015 JEA Hurricane Exercise Series - JEA personnel were exercised as they are considered essential during the response phase of a disaster, and as such are expected to report for duty.



3 Days, 200 people, 85 Experts

2015 St. Johns County "Hurricane Gibson" Exercise - Regional Council staff assisted with the planning and implementations of the annual St. Johns County Emergency Management hurricane exercise.



The Northeast Florida Healthcare Coalition (NEFLHCC) conducted a measles virus tabletop exercise (TTX) with a multi-disciplinary group of participants from their six county region on April 29, 2015.

63 persons/6 disciplines = Regional Health

Regional Enhancement

Technical Assistance

The NEFRC enjoys serving as the planner in residence for the towns of Beverly Beach, Interlachen, and Pomona Park. Services include regulatory reviews, land development ordinances, and grant proposals.

Comprehensive Planning

The NEFRC evaluated 32 large scale map amendments to local comprehensive plans for consistency with the Strategic Regional Policy Plan.

The State of the Region (SOTR)

The State of the Region, released in 2014, is provided through a series of metrics divided by the elements of the Strategic Regional Policy Plan. Visit the Resource Library: www.nefrc.org/State-of-the-Region.htm.



Analysis

The Council assists our member governments and economic development councils to model potential economic impacts of proposed and existing development projects using regional economic modeling software. During 2015, the Council completed 4 model runs for 2 counties of the Region.

Developments of Regional Impact (DRI)

The NEFRC approved what may be known as the last DRI in the State. Changes to Growth Management statutes eliminated the mandatory review of projects triggering regional development thresholds, replacing it with a state coordinated review process. Before the law went into effect, the Council considered the South Old Kings Road DRI located in Palm Coast.

CRS Users Group

The Northeast Florida CRS Users Group, made up of the counties and municipalities in our region, continues to meet to discuss the challenges and share best practices as it relates to participating in the Community Rating System (CRS).

Healthcare Coalition

The Northeast Florida Healthcare Coalition (NEFLHCC) continues to grow and develop. The mission of the NEFLHCC is to achieve a health and medical system that is efficient and resilient in an emergency.



Community & Economic Development

Comprehensive Economic Development Strategy (CEDS)

The Northeast Florida Comprehensive Economic Development Strategy Committee held its annual meeting in 2015 at Mayo Clinic. Strategy Committee Chair, Dr. Perry Bechtle presented a reminder of how the 2014-2019 CEDS was done, and presented its overall approach of "What if? Why not?"; speaking specifically about education in the region and the importance of good outcomes in K-12 to the success of the entire region. The committee added four new projects to the vital project list: Medical Tourism, Brevi Bus, Coastal Modelling, and Fishing Industry.

The State Housing Initiatives Program (SHIP)

The State Housing Initiatives Program provides local support through state appropriations from the Sadowksi Housing Trust Fund. During Fiscal Year 14/15, Baker County received \$350,000 and Putnam County received \$378,000 to implement the housing strategies.

P2R2 and R2E2

The Public/Private Regional Resiliency (P2R2) Committee is a business-focused committee of NEFRC. It announced its position on the importance of resiliency to the future of Northeast Florida in May of 2015, and launched a series of action items in July. Over 150 people attended the July kickoff event at the Museum of Contemporary Art in Downtown Jacksonville. Work on the first round of action items is taking place at Regional Resiliency Evening Exchanges (R2E2), monthly open house events at the Council. P2R2 makes use of the hard-working volunteers that are so important to Northeast Florida.

**Northeast Florida
Private Real Estate
Investment Vulnerability**

Impact Area	% of Parcels	Private Parcels	Private Acres	Private Value
Storm Surge 1-5	31.2%	247,000	398,000	\$25.4B
1' Sea Rise	3.9%	31,000	48,000	\$1.6B
3' Sea Rise	5.9%	47,000	74,000	\$2.9B
6' Sea Rise	11.2%	87,000	123,000	\$6.4B

Source: 2013 Northeast Florida Regional Evacuation Study, NOAA, Florida Department of Revenue



Transportation Disadvantaged

NEFRC is the planner for the transportation disadvantaged programs in six counties. There was a strong showing by Northeast Florida at the Annual Transportation Disadvantaged Awards. Northeast Florida was well represented with nominations in several statewide categories. Putnam County Commissioner Nancy Harris won the Elected Official Award, Helen Perez of JTA won the Urban Community Transportation Coordinator Award, and Sheryl Hartzog of the Clay County Council on Aging won the Sheila Winitzer Shining Star Award. Each was recognized for their extraordinary service to ensure mobility for the transportation disadvantaged in Northeast Florida.



Top row: 2nd from left is Sheryl Hartzog, 3rd from left is Helen Perez. Bottom row: 2nd from left is Commissioner Nancy Harris.

Thriving Small Business

Meetings were convened in Maxville and Hastings, in August, to begin a discussion of marketing the small towns, rural areas and special places of Northeast Florida. Attendees agreed that the region has assets that are unique and worth marketing. Work will continue on this approach.

Regional Community Institute

The Institute provides a non-profit policy think-tank that convenes regional leaders to focus on the most pressing regional issues. They provide an opportunity to use local expertise and contacts to develop policy recommendations for the NEFRC Board, and provide expertise that otherwise would be costly and less specific to Northeast Florida.

Regional Leadership Academy

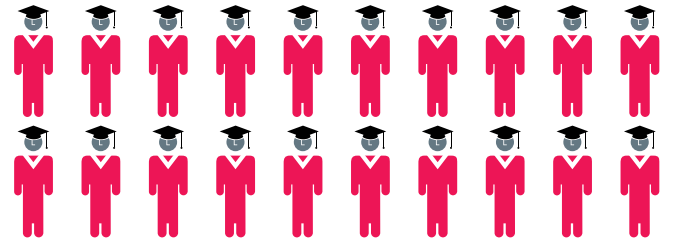
Fourteen regional leaders graduated from the Regional Leadership Academy in September and are now members of the Regional Community Institute. They visited all seven counties, experienced NAS Jax, JaxPort, redevelopment initiatives in Green Cove Springs and Palatka, the history of Macclenny and American Beach, and the farms and technology of Flagler and St. Johns County.



RLA Graduates and Candidates learn from each other at the Kick-off Social

Over **200**

Leaders Have Graduated From RLA to Date



RLA Class of 2015