



NORTHEAST FLORIDA REGIONAL COUNCIL

ANNUAL REPORT

FISCAL YEAR 2023-2024

A LETTER TO THOSE WE SERVE



Dear Esteemed Friends and Stakeholders,

As we reflect on the past year, we at the Northeast Florida Regional Council are filled with a sense of pride and accomplishment. The partnerships and collaborations that we have fostered within our local communities have been instrumental in driving the success of the regional community. It is with great pleasure that we present to you our Annual Report, shedding light on the remarkable achievements and activities of the past year.

We are immensely grateful for the unwavering support and collaboration of our community partners, leaders, and the communities we serve.

Their dedication and hard work have been pivotal in accomplishing our shared goals. Throughout the year, the Council has achieved significant milestones, from closely collaborating with the Jacksonville City Council's Special Committee on JSO Facilities to providing essential Planning and Technical Assistance to the City of Flagler Beach. These initiatives underscore our steadfast commitment to empowering our communities and fostering their growth.

The spirit of collaboration and the exchange of knowledge that arises from our regional partnerships are invaluable. They enable us to better understand the diverse needs of our citizens and work together towards a more resilient Northeast Florida. We take immense pride in the lasting relationships we have built, and we eagerly anticipate the new challenges and opportunities that lie ahead.

As my tenure as President of the Northeast Florida Regional Council comes to an end, I extend my heartfelt gratitude to all those who have been part of this remarkable journey. I am confident that with the capable leadership of our incoming President, Commissioner Jim Renninger, our Council will continue to drive positive change and progress in the Region.

Thank you for your continued support and collaboration!

Commissioner Christian Whitehurst
NEFRC Board President

BRINGING COMMUNITIES TOGETHER SINCE 1977

BOARD OF DIRECTORS

The NEFRC Board of Directors provide critical insights and information that help the Council make informed decisions that affect the quality of life within our region. The Board is made up from elected officials from each of the seven counties and also include gubernatorial appointees and ex-officio members. The Board President rotates among counties and officers change at the start of each fiscal year.

FISCAL YEAR 2023-2024 BOARD OFFICERS



**COMMISSIONER
CHRISTIAN WHITEHURST
PRESIDENT
ST. JOHNS COUNTY**



**COMMISSIONER
JIM RENNINGER
1ST VICE PRESIDENT
CLAY COUNTY**



**COUNCILMEMBER
KEN AMARO
2ND VICE PRESIDENT
DUVAL COUNTY**



**MR. DARRYL REGISTER
SECRETARY/TREASURER
BAKER COUNTY**

Honorable Jimmy Anderson - *Baker County*

Honorable James Bennett - *Baker County*

Mr. Michael Griffis - *Baker County*

Honorable Betsy Condon - *Clay County*

Mr. Steve Kennedy - *Clay County*

Mr. Michael Bourre - *Clay County*

Honorable Mike Gay - *Duval County*

Honorable Sean Lynch - *Duval County*

Honorable Elaine Brown - *Duval County*

Honorable Andy Dance - *Flagler County*

Honorable David Sullivan - *Flagler County*

Honorable Catherine Robinson - *Flagler County*

Honorable Sara Arnold - *St. Johns. County*

Honorable David Alfin - *Flagler County*

Honorable John Drew- *Nassau County*

Honorable John Martin - *Nassau County*

Honorable David Sturges - *Nassau County*

Honorable Larry Harvey - *Putnam County*

Honorable Paul Adamczyk - *Putnam County*

Honorable Roy Alaimo - *St. Johns County*

Honorable Roxanne Horvath - *St. Johns County*

Curtis Hart - *Florida Department of Economic Opportunity*

Doug Conkey - *St. Johns River Water Management District*

Greg Strong - *Florida Department of Environmental Protection*

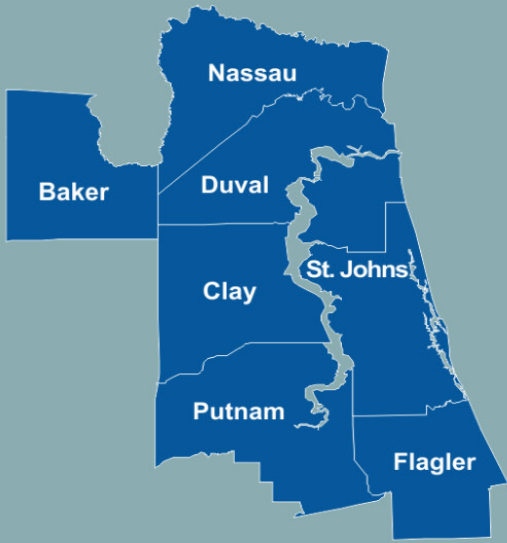
Derek Dixon - *Florida Department of Transportation*



OUR MISSION

The NEFRC's mission is to celebrate the unique assets of Northeast Florida and engage its people, businesses, governments, and organizations. In pursuit of this mission, we communicate issues, convene stakeholders, collaborate with others, analyze and calculate, and construct solutions.





LOCAL PARTNERSHIPS

REGIONAL IMPACT

A SPECIAL THANK YOU TO OUR

Community Partners

NEFRC'S ROLE IN REGIONAL **Economic Development**

The NEFRC is the dedicated Economic Development District for the Economic Development Administration, working on a broad range of economic development priorities, including providing technical assistance for the development of federal grant applications. The NEFRC also uses REMI PI+ economic modeling software and works with local governments to provide project analysis. The following are some of projects the Economic Development team was able to accomplish.

Visioning plays a crucial role in economic development by providing a clear and shared direction for a community's future. By creating a shared vision, communities can strategically plan and implement initiatives that align with their values and aspirations, ultimately driving sustainable economic development.

ST. AUGUSTINE VISION PLAN UPDATE



The NEFRC is assisting the City of St. Augustine in updating its Vision Plan. The previous vision was foundational for the community's decision-making over the past decade. The City has changed in that time, and an update is required to reflect the most up-to-date community feedback, goals, and objectives to guide the community in the coming years.

Six public meetings are scheduled across the City of St. Augustine from September to November 2024. The 2024 City of St. Augustine Vision Plan will be presented to four boards, including the Planning and Zoning Board, Historic Architectural Review Board, Corridor Review Committee, and the St. Augustine City Commission.

PALATKA VISION PLAN



The NEFRC worked with the City of Palatka on developing a Vision Plan to define how residents and leadership envision the community's look and function in the next 10-20 years. The Vision Plan will help the City update its subsequent 2045 Comprehensive Plan.

NEFRC conducted eight public meetings using Mentimeter, a tool that provides live responses, and administered an online survey. Unique to this project was the use of youth input, of the over 1,500 comments collected, 49% of the results belonged to the youth.

The Vision Plan's theme includes mixed-use zoning, affordable housing, infill development, and pedestrian-friendly infrastructure.

REMI ECONOMIC IMPACT FORECASTS

REMI is an economic forecasting and policy analysis software model through which the NEFRC can project employment, GDP growth, and population due to proposed business development projects. NEFRC analyses proposed economic development projects using REMI software to predict their impact on jobs, income, and other factors. This past year, NEFRC conducted REMI analyses for an aircraft manufacturing facility. The REMI results helped the County develop an incentive package that fit the project's unique nature. REMI analyses were conducted for Baker, Duval, St. Johns, and Flagler counties.

POLICY & PLANNING

NEFRC engage and support our stakeholders in a variety of ways, including support with local policy issues and technical assistance for local planning. Among the assistance provided, and communities supported this past year were:

LOCAL TECHNICAL ASSISTANCE

- CITY OF FLAGLER BEACH - FLAGLER COUNTY
- TOWN OF BALDWIN - DUVAL COUNTY
- TOWN OF CALLAHAN - NASSAU COUNTY
- TOWN OF POMONA PARK - PUTNAM COUNTY
- TOWN OF BEVERLY BEACH - FLAGLER COUNTY

EVALUATION & APPRAISAL REVIEW OF COMPREHENSIVE PLAN

- TOWN OF POMONA PARK - PUTNAM COUNTY
- PUTNAM COUNTY



TRANSPORTATION DISADVANTAGED PROGRAM

The importance of transportation often goes unnoticed and it's important to our quality of life. The Transportation Disadvantaged Program is a coordinated system in all of Florida's 67 counties. The Program was created in 1979 to ensure that efficient and low-cost transportation is available to those who qualify as disadvantaged, such as low-income residents, seniors, persons with a disability, and children at-risk. These individuals depend upon this service to transport them to medical appointments, employment, grocery stores, and even social activities.

The NEFRC serves as staff for each Local Coordinating Board (LCB) in the Region. That includes elected officials, representatives from agencies within the local community, local citizens, and those who advocate for the transportation system. The LCB members serve the purpose of identifying transportation needs in the community and can aid the Community Transportation Coordinator (CTC) on services provided in their county.

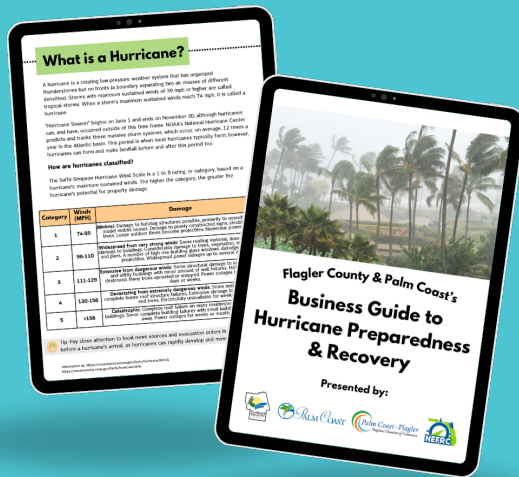
NEFRC is the Designated Official Planning Agency for the region. Together with the CTC, they developed the Transportation Disadvantaged Service Plan (TDSP). The TDSP is a guide for the Transportation Disadvantaged Services in each county to make sure the needs of the community are being met.

The Northeast Florida Region has completed over 600,000 trips for Transportation Disadvantaged in total during the 2023-2024 Fiscal Year.



This year Richard Briggs, Flagler County was awarded the 2023 Driver of the Year by the Commission for the Transportation Disadvantaged.

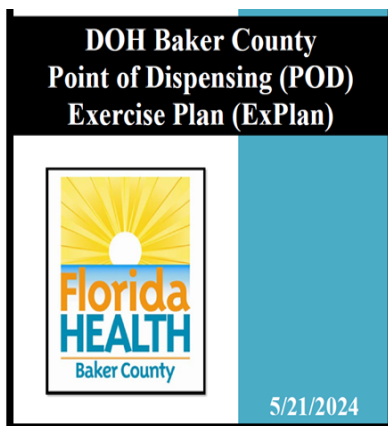
EMERGENCY PREPAREDNESS



The Flagler County and Palm Coast Business Guide to Hurricane Preparedness and Recovery was developed by NEFRC staff for Palm Coast, Flagler County, and the Palm Coast- Flagler Chamber of Commerce to share with business owners at the beginning of the 2024 hurricane season. This guide includes information about how to prepare for a hurricane as well as how to recover from a hurricane, including information about funding from the Small Business Administration.

TRAINING EXERCISES

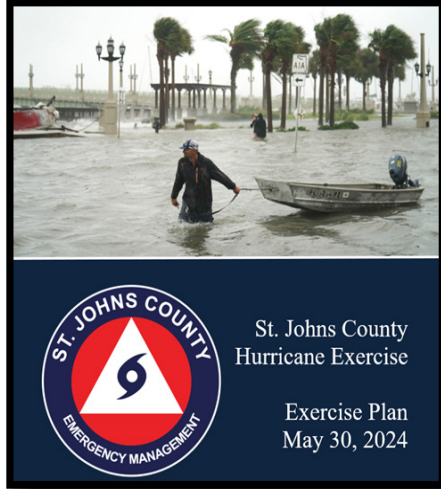
The NEFRC maintains staff who are certified emergency managers and master exercise practitioners. The NEFRC regularly works with partners on training exercises and uses the Homeland Security Exercise and Evaluation Program guidance, which is a set of principles for designing, conducting, and evaluating exercises. Training exercises are a vital part of preparedness and help communities assess their capabilities and identify opportunities for improvement.



FLORIDA DEPARTMENT OF HEALTH IN BAKER COUNTY: POINT-OF-DISPENSING EXERCISES

NEFRC staff and personnel from the Florida Department of Health in Baker County organized and executed two training exercises to test and validate FDOH-Baker County's Point of Dispensing (POD) Plan. A POD plan is a model for providing medications, vaccines, or medical supplies to a large community during a health emergency. The first was a discussion-based exercise focused on internal and external coordination and communication. In contrast, the second exercise was an operations-based exercise emphasizing POD setup, dispensing strategies, and logistical support.

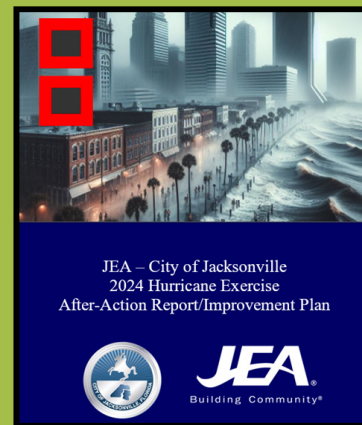
ST. JOHNS COUNTY 2024 HURRICANE EXERCISE



St. Johns County Emergency Management has become seasoned in handling hurricane-related challenges, this is the 15th year of exercise partnership. During this operations-based exercise, the team tested their communication and coordination capabilities in response to a hurricane's cascading impacts. During the 2024 hurricane exercise, what began as a typical simulation for hurricane response swiftly transformed into a scenario involving a train derailment and hazardous materials release in St. Augustine, Florida. This shift allowed the emergency operations center and activation staff to practice emergency response coordination for a realistic hazard that could accompany a tropical system.

JEA – CITY OF JACKSONVILLE 2024 HURRICANE EXERCISE

The 2024 JEA-COJ Hurricane Exercise was a three-day functional exercise with JEA's Leadership and Section Chiefs, the City of Jacksonville's Emergency Preparedness Division, and the Florida Division of Emergency Management. It is important to note that the 2024 hurricane exercise focused on three specific snapshots in time. This was done to test and evaluate six objectives over the three-day exercise. As with most hurricane activations, agency priorities evolved depending on pre-impact decision-making, post-impact response needs, and cascading impacts on JEA resources and infrastructure.



ANHEUSER-BUSCH AND CITY OF JACKSONVILLE HAZARDOUS MATERIALS RELEASE EXERCISE

In the Spring of 2024, the Local Emergency Planning Committee staff of the NEFRC brought together the Resident EHS Manager from Anheuser Busch Jacksonville Brewery, in coordination with the Hazardous Materials Team of Jacksonville Fire and Rescue, engaged in a simulated hazardous chemical release exercise known as Operation: Angry Leprechaun. This strategic tabletop exercise served as a platform for open dialogue, fostering critical discussions and a unified approach to emergency preparedness. The primary goal was the establishment and seamless integration of an incident command structure.

HEALTHCARE COALITION PROGRAM



The Healthcare Coalition (HCC) Program is a federal initiative bringing together all healthcare sectors to plan, train, exercise, and equip in advance of disasters and emergencies. Made up of 10 funded HCC Regions, the Florida Department of Health contracts the NEFRC to manage three healthcare coalitions that serve 18 counties. Known as the Alliance, coalition membership is comprised of 895 individuals (from 550 organizations, agencies, and facilities) across 11 business sectors.

The Alliance provided more than 400 individuals with emergency preparedness-related training and exercises last year. The training and exercise offerings allow members to plan for various threats, including chemical surges and exposure, pediatric surges, and severe weather. These opportunities foster resiliency within the regional healthcare delivery system.

HCC project funding aims to close gaps within the Alliance, thus building a more resilient regional healthcare system. Projects are focused on training and equipping to assist first responders, hospitals, and emergency management agencies in their preparedness and response activities. A total of \$350,473 was spent on member projects during fiscal year 2023-2024 in the 18-county HCC Region. Total project dollars within the Northeast Region: \$215,130.39. This year's project funding included purchasing a regional cache of pediatric medical evacuation equipment for the Alliance to fill gaps for pre-hospital and hospital partners. Individual member projects included:



**8 PEDIATRIC
MED SLEDS
PURCHASED FOR
THE REGION**

\$11,815

BAKER COUNTY:

- Equipment for MCI Trailer Replenishment for Fire Rescue Department - \$5,990
- Training Manikins (adult and pediatric) for Emergency Management - \$9,550

CLAY COUNTY:

- SimMan (Simulated Pediatric Training Manikin) for Fire Rescue Department - \$62,000

FLAGLER COUNTY:

- FirstNet miniCRD for Emergency Management - \$34,995
- Decontamination Equipment for AdventHealth Palm Coast Parkway Hospital - \$72,500

DUVAL COUNTY:

- Powered Air Purifiers (PAPRs) for Baptist Health



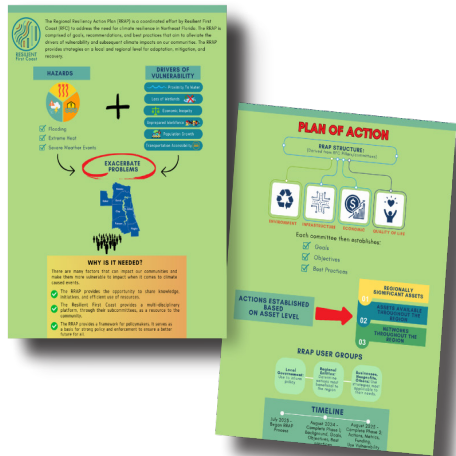
Simulated Pediatric Training Manikin



15 'til 50 Mass Casualty Exercise at St. Vincent's Southside

RESILIENCY

REGIONAL RESILIENCY ACTION PLAN

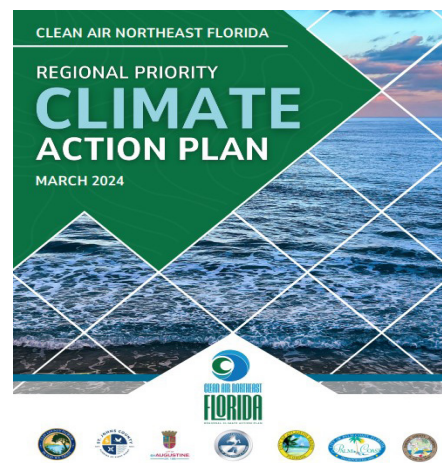


The NEFRC led a collaborative effort by Resilient First Coast to develop Phase I of a Regional Resiliency Action Plan (RRAP) that provides a set of goals, objectives, and best practices for the Region to collaboratively mitigate and adapt to a changing climate. The RRAP won a NADO award, due to both its regional focus and its ability to be replicated by many other regional resiliency collaboratives throughout the Nation. The RRAP assists in protecting the people and assets of the Region from the current or expected impacts of climate change.

In addition to developing the policies needed to guide adaptation, the RRAP encourages governments to look at large-scale measures, such as strengthening or relocating infrastructure from coastal areas affected by sea-level rise, building infrastructure able to withstand more extreme weather conditions, enhancing early warning systems and access to disaster information, developing insurance mechanisms specific to climate-related threats, and creating new protections for wildlife and natural ecosystems.

CLIMATE POLLUTION REDUCTION GRANT

The NEFRC assisted the City of Jacksonville with completion of a Priority Climate Action Plan for Northeast Florida with multiple measures to reduce greenhouse gas emissions. The NEFRC-led working group contributed to the objectives of the Clean Air Northeast Florida initiative.



CDBG MULTIREGIONAL PROJECT

WHAT DOES Extreme Rainfall LOOK LIKE IN FLORIDA'S FUTURE?

INCREASED FLOOD RISK

- Increased flood risks are not isolated to the coast, as evidenced by Hurricanes Irma and Ian.
- Understanding the potential for future extreme rainfall can reduce impacts to people and property through appropriate planning, policy decisions, and emergency preparedness protocols.

Why Future Extreme Rainfall?

STATE STATUTE

Since 2015, the "Peril of Flood" legislation moved toward future conditions (sea level rise, future flood risk, and more intense rain events) in coastal county planning efforts.

In 2021, the Resilient Florida legislation required future rainfall to be analyzed to the extent possible by vulnerability assessments for all counties in Florida, including inland counties.

REBUILD FLORIDA PROGRAM

The Rebuild Florida Community Development Block Grant-Mitigation (HUD CDBG-MT) grant program resulting from Hurricane Irma provided an opportunity for select Regional Planning Councils to evaluate the development of a statewide approach to assessing impacts from future rainfall events and establishing a statewide framework to examine and address these impacts regionally.

In 2022, the Florida Commerce's (Formerly DEO) HUD CDBG-MT awarded the East Central Florida Regional Planning Council **\$1.499 million** in funding to conduct a collaborative mitigation resilience project among six regional planning councils.

EXTREME RAINFALL AMOUNT

Future extreme rainfall amounts were determined using existing NOAA Atlas 14 data, with Change Factors applied from the Florida International University Florida Building Commission study and CORDEX models, to arrive at rainfall values for the hypothetical 24-hour, 100-year storm.

How are we Predicting?

FLOODING DEPTH DUE TO EXTREME RAINFALL

The Inundate! Tool predicts flooding depth using inputs from extreme rainfall amounts. The tool is a model that produces dual output (overland precipitation flow and ponding) based on the hydrology modeling used.

LEGEND

Future Extreme Rainfall (24hr 2040)

High

Low

IMPACTS OF EXTREME RAINFALL

- Using the *Inundate!* Tool, exposed areas may be prioritized for further detailed analysis, adaptation and mitigation measures.
- A sensitivity analysis, including a Social Vulnerability Index, should be used in conjunction with the *Inundate!* Tool to examine the social characteristics of impacted areas and understand vulnerabilities of communities to extreme rainfall, especially those underserved.

The NEFRC worked collaboratively with five other Regional Planning Councils to predict and address flooding due to extreme rainfall throughout Peninsular Florida. This fiscal year, NEFRC conducted a large-scale analysis for both coastal and inland counties in the Region and began to prioritize areas for development of corresponding mitigation plans and projects.

SOUTH ATLANTIC SALT MARSH INITIATIVE



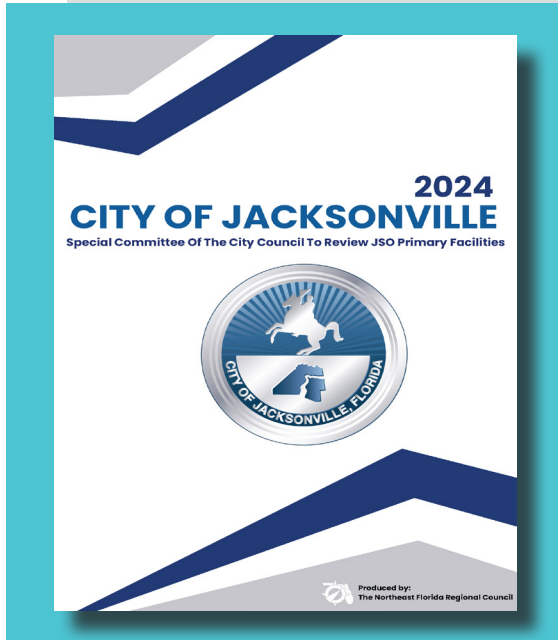
The NEFRC partnered with the four states (FL, GA, SC, and NC) of the South Atlantic Salt Marsh Initiative (SASMI) to begin developing nature-based solutions in vulnerable communities of the salt marsh, based on data analysis and community input. The purpose of SASMI is to promote saltmarsh conservation in the Southeast United States.



Resilient First Coast (RFC) is the Regional Resiliency Collaborative for Northeast Florida led by NEFRC. It is a formal partnership to work together to improve the resilience of the Region. It is comprised of local governments, businesses, non-profit organizations, academia, and federal/state agencies. Its four subcommittees address Environment, Infrastructure, Quality of Life, and Economic Resilience. During the past fiscal year, RFC completed the Regional Resiliency Action Plan and coordination of Vulnerability Assessments throughout the Region.

SPECIAL PROJECTS

SPECIAL COMMITTEE OF THE CITY COUNCIL JSO PRIMARY FACILITIES REVIEW



Over the past year, NEFRC provided administrative support to a Special Committee of the City of Jacksonville's City Council in their review of the Jacksonville Sheriff's Office Primary Facilities. Under the direction of then City Council President Ronald Salem, and Special Committee Chair Michael Boylan, staff assisted with a seven-month investigative effort, that included over 30 fact-finding meetings across five working groups and culminated in NEFRC producing a final report for the Committee.

In August 2024, the NEFRC was awarded the NADO Aliceann Wohlbruck Impact Award for the work done on this special project!

NEFRC ENGAGEMENT IN SUBSTANCE USE DISORDER INITIATIVES ACROSS NORTHEAST FLORIDA



The Northeast Florida Regional Council (NEFRC) actively participates and engages with all seven counties in the Region to support efforts in addressing Substance Use Disorders. NEFRC plays a critical role in facilitating collaboration among county-level partners, offering guidance, and sharing best practices to strengthen local initiatives. These efforts ensure that elected officials are informed and that resources are effectively directed toward addressing Substance Use Disorder across Northeast Florida.

SUBSTANCE USE DISORDER SWOT REPORTS

NEFRC is working to complete a comprehensive Substance Use Disorder Strengths, Weaknesses, Opportunities, and Threats (SWOT) analysis for the seven counties of Northeast Florida, focusing on three key areas: Prevention, Treatment, and Recovery Support. The process begins with community meetings where NEFRC staff facilitates the SWOT process, gathering input from stakeholders across various sectors. The information collected during these sessions is compiled into detailed reports that are used to educate elected officials within each jurisdiction. They provide actionable insights to inform policy decisions and resource allocation, helping to strengthen local responses to substance use challenges.

In 2024, NEFRC successfully completed this process for Nassau County and the Jacksonville area beaches communities. In 2025, NEFRC will finalize the SWOT analysis with reports for Putnam and Flagler Counties before compiling a comprehensive Regional Report that will integrate findings across all seven counties.

OTHER EFFORTS:

EVALUATOR FOR SUBSTANCE ABUSE MENTAL HEALTH SERVICES ADMINISTRATION FIRST RESPONDERS-COMPREHENSIVE ADDICTION & RECOVERY GRANT

OPIOID ABATEMENT TASK FORCE SUPPORT FOR NASSAU COUNTY

OPIOID ABATEMENT TASK FORCE SUPPORT FOR CLAY COUNTY

Through the collaborative efforts of NEFRC in supporting the Opioid Abatement Task Forces for Clay and Nassau Counties, as well as the evaluation work conducted for Clay County's SAMHSA First Responders-Comprehensive Addiction & Recovery grant, significant strides are being made in addressing Substance Use Disorders across Northeast Florida. By understanding the unique challenges and solutions emerging within each county, NEFRC staff is able to provide valuable insights and foster collaboration across the Region. This interconnected approach ensures that all seven counties in Northeast Florida benefit from shared knowledge, best practices, and coordinated efforts to combat the opioid crisis and improve public health outcomes.

ECO-TOURISM AND TRAILS INITIATIVE

In 2023, following the impacts of Hurricanes Ian and Nicole, the Council Board asked staff to begin a regional initiative targeting trails and promoting recreational opportunities. NEFRC staff established a regional steering committee that identified seven key areas that could benefit from regional coordination and support. The key areas are:

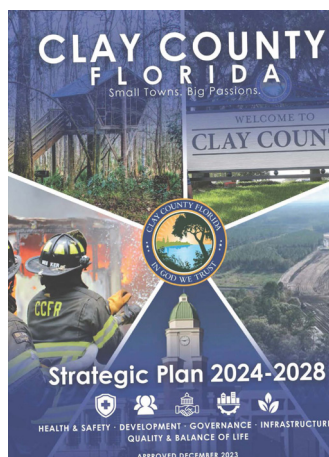
- 1) Trail Signage Standards
- 2) GIS Mapping and Storyboards
- 3) FDEP Trail Town Designations
- 4) Youth Stewardship Programming
- 5) Regional Marketing
- 6) Consensus on Future Trail Locations
- 7) Funding Opportunities



Work has commenced, and activities are ongoing in the seven key areas. Here are a few highlights from this year.

NEFRC has been collaborating with the National Park Service - Rivers, Trails, and Conservation Assistance Program to provide support for projects in the Region. In October 2024, the NEFRC was notified that four projects spanning five counties were selected and will receive NPS-RTCA assistance over the next three years. The NEFRC is working with Smart North Florida and a group of graduate students from the University of Florida on GIS mapping and developing a regional trails layer. NEFRC assists communities who want to attain the FDEP Trail Town designation by coordinating Trail Town self-assessments. This is the first step to determining if you are a qualified community for the program designation.

CLAY COUNTY STRATEGIC PLAN



This year, NEFRC assisted with the creation of the Clay County Strategic Plan. Relevant existing plans to the strategic planning process were gathered and summarized as a starting point for the County's strategic vision. Additionally, the NEFRC attended county-coordinated meetings, facilitated meetings and listening sessions, and assisted in summarizing the data and information collected from the participants. They also worked with County staff on drafting a summary of countywide priorities for a strategic plan based on internal county plans and public input for review by county leadership and staff. Furthermore, they brainstormed applicable objectives and measures for success.

REGIONAL AWARDS FOR EXCELLENCE



The prestigious Regional Leadership Award was presented to **State Representative Cyndi Stevenson**, recognizing her outstanding service to the Region and commitment to regionalism. This award recognizes the activities of an individual who has exhibited an unrelenting enthusiasm for regional coordination and cooperation. As a state representative for District 18, she has worked tirelessly to serve St. Johns County and Northeast Florida. She brings such a diverse and relevant experience to the table. In addition to her local and State government work, we are proud to mention that Representative Stevenson served on the Northeast Florida Regional Council as Vice-President, among other significant accomplishments.

2023 REGIONAL AWARD OF EXCELLENCE RECIPIENTS

- Excellence in Affordable Housing: *Tiny Home Development Program* – Nassau County
- Excellence in Cultural & Historical Preservation: *First Baptist Church Rehabilitation* - St. Johns County
- Excellence in Economic Development & Tourism: *Port Putnam* – Putnam County
- Excellence in Environmental Stewardship: *Follow the Water UF/IFAS Extension* – Baker & Nassau Counties
- Excellence in Healthcare Emergency Preparedness: *AdventHealth Palm Coast Parkway Full Scale Exercise* – Flagler County
- Excellence in Planning & Growth Management: *City of Green Cove Springs Community Redevelopment Area* – Clay County
- Excellence in Public Safety: *Jacksonville Aviation Authority 2023 Triennial Aviation Disaster Exercise* – Duval County
- Excellence in Quality of Life: *Minute with the Mayor* – Nassau County
- Excellence in Resilience: *Resilient Jacksonville* – Duval County
- Excellence in Transportation: *Flagler Greenways Pedestrian Bridge* – Duval County



The Regional Community Institute (RCI), made up of NEFRC's Regional Leadership Academy graduates, provides visionary leadership and coordination among stakeholders to enhance and preserve the quality of Northeast Florida's natural, built, economic, and social environment. Established in 2005, RCI focuses on impactful, one-off projects that address regional challenges from a policy perspective.

RECENT ACCOMPLISHMENTS

**First Coast Well-Being Index
Heirs Property Recommendations and Tools**

REGIONAL LEADERSHIP ACADEMY

The Northeast Florida Regional Leadership Academy (RLA), a flagship program of the NEFRC, is dedicated to fostering a commitment to regionalism and empowering future leaders to shape the Region's success. Through an immersive eight-class program spanning the entire Northeast Florida region, RLA connects leaders from various sectors—business, agriculture, healthcare, government, education, nonprofits, and more. Participants gain a rich understanding of the region's history, resources, and unique challenges while learning about innovative solutions that local governments and organizations have implemented. This experience prepares graduates to actively drive regional collaboration and make Northeast Florida a better place to live and work.



2023-2024 GRADUATES

Amy Lukasik	Les Sims
Andy Dance	Lewan Brunson
Chris Kelcourse	Meagan Perkins
Colin Moore	Melissa Wissel
Holly Albanese	Monica Dominguez
Jamie Lynn Lankenau	Natalia Smith
Jessica Finch	Rebekah Cooper
Kelly Wilson	Shanell Davis- Bryan
Kenajawa Woody	

**LOOKING FORWARD TO THE OPPORTUNITIES AHEAD
THANK YOU FOR MAKING THIS ANOTHER GREAT
YEAR!**



**Pictured above is the 2023-2024 Board of Directors*

NORTHEAST FLORIDA REGIONAL COUNCIL
140 E. ADAMS STREET, STE. 320, JACKSONVILLE, FL 32202
INFO@NEFRC.ORG | WWW.NEFRC.ORG | (904) 279 - 0880

DID YOU KNOW?



WE MOVED!

We are happy to announce that in August of 2024, the Council began operations in its new location on the third floor of the Jessie Ball DuPont Building, 40 E. Adams, Street, Jacksonville Fl, 32202.

