



Northeast Florida Regional Council  
Military Installation Readiness Review

# Steering Committee

January 27, 2025



**Jacobs**

# Agenda

<b>10:00 am</b>	Welcome and Introductions
<b>10:15 am</b>	Project Scope and Overview
<b>10:30 am</b>	TAC Meeting Review
<b>10:40 am</b>	Vulnerability Assessment Methodology Overview
<b>10:55 am</b>	Overview of Vulnerability Assessment Results <ul style="list-style-type: none"><li>■ NS Mayport</li><li>■ MCSF Blount Island</li><li>■ Camp Blanding JTF</li><li>■ NAS Jacksonville</li></ul>
<b>11:45 am</b>	Next Steps & Questions

## Today's Objectives:

Review vulnerability assessment methodology

Review and confirm results of vulnerability assessment

# Introductions



# Steering Committee Mission

- **Mission:** To build consensus and provide information and guidance based on local knowledge, historical context, and best available data on future conditions.



# Project Status





The purpose of the MIRR is to identify the risks, hazards, and vulnerabilities of concern as it relates to the ability of the military to carry out its missions on the installation that could be mitigated through investments and solutions ***outside the fence line in the community.***



# Project Timeline



# TAC Meeting Overview

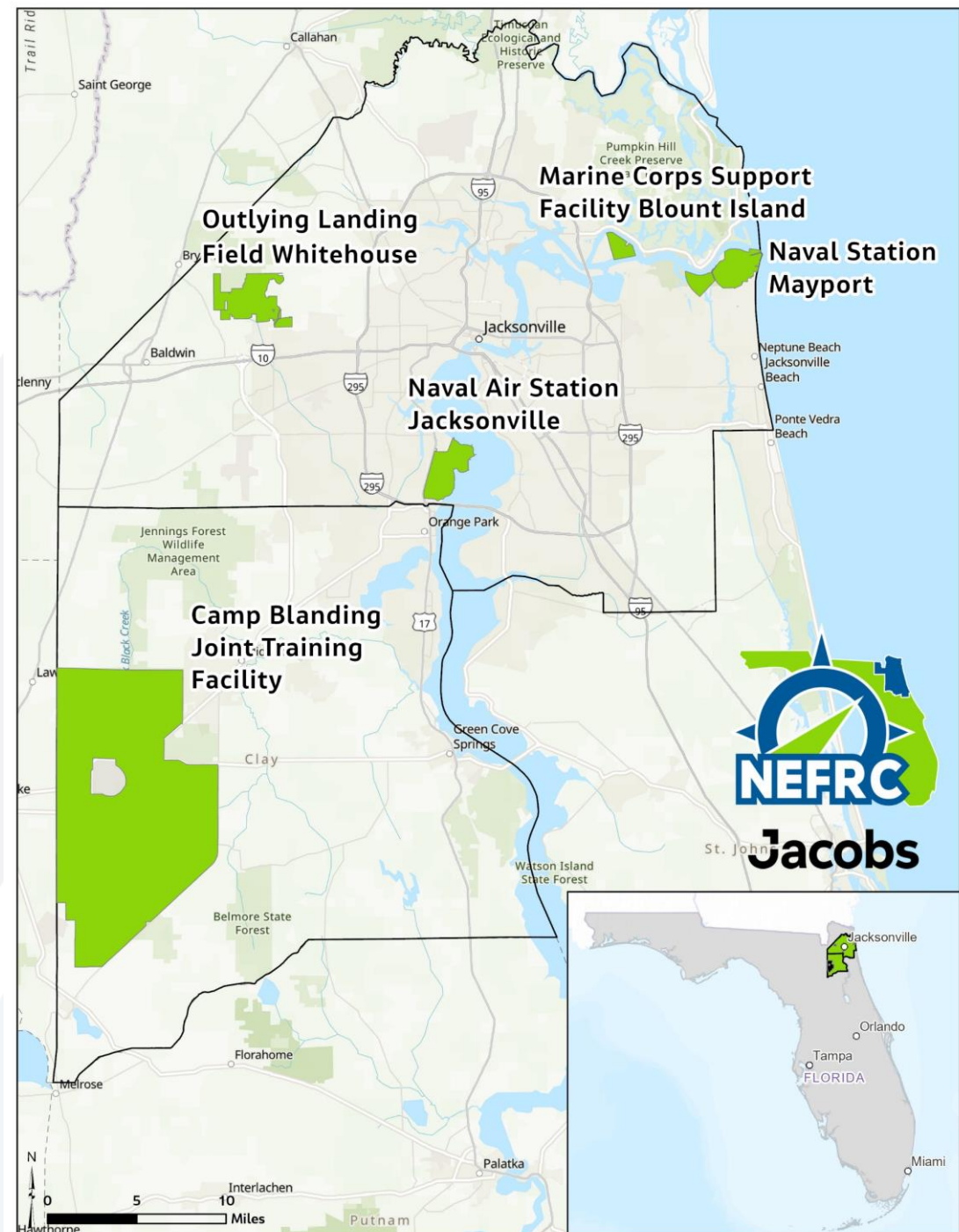


# Methodology Overview

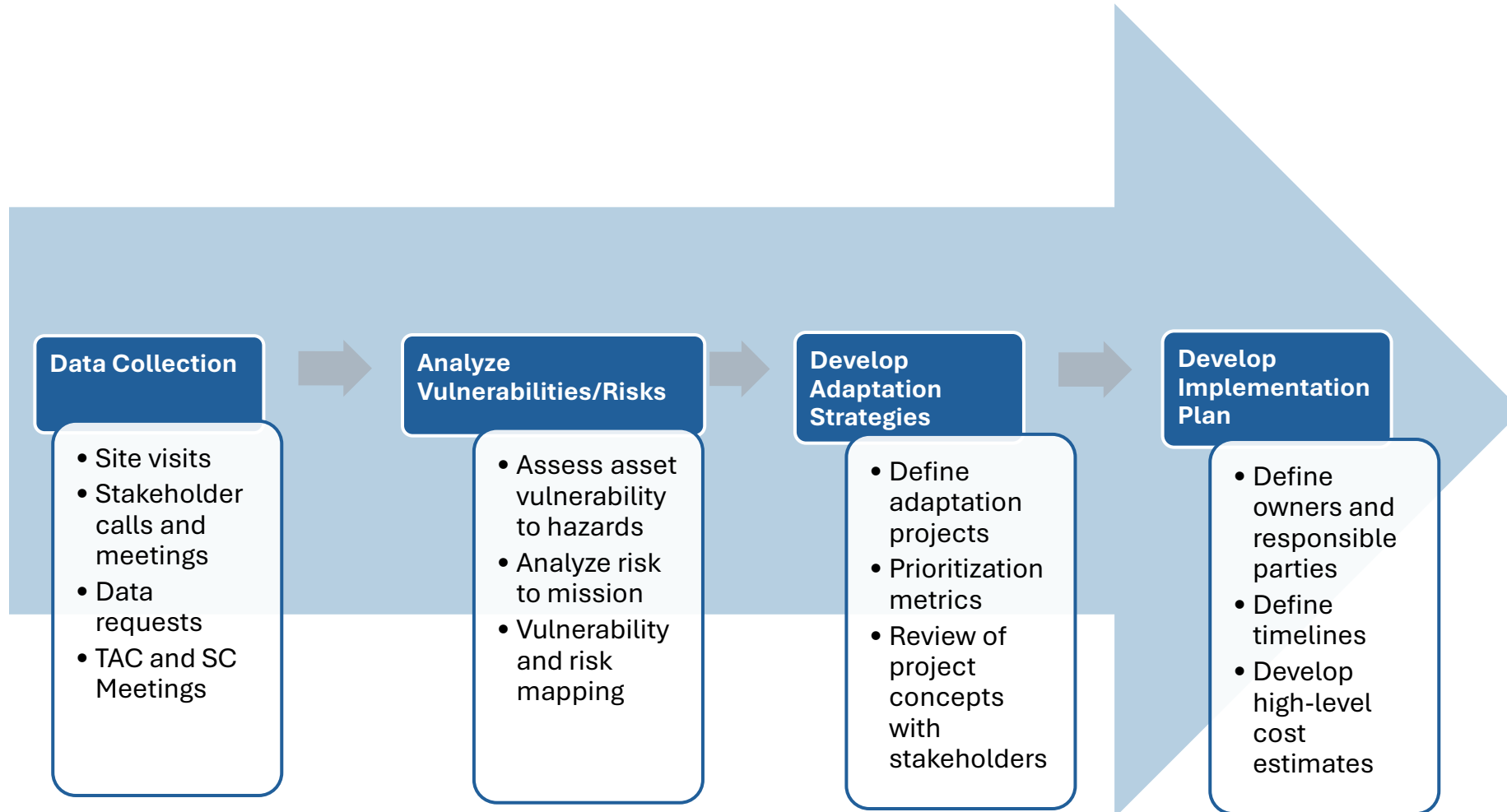


# Study Area Boundary

- Study area boundaries define the area that will be covered by the vulnerability assessment and adaptation projects
  - Includes hazards and mission-critical assets



# Project Methodology

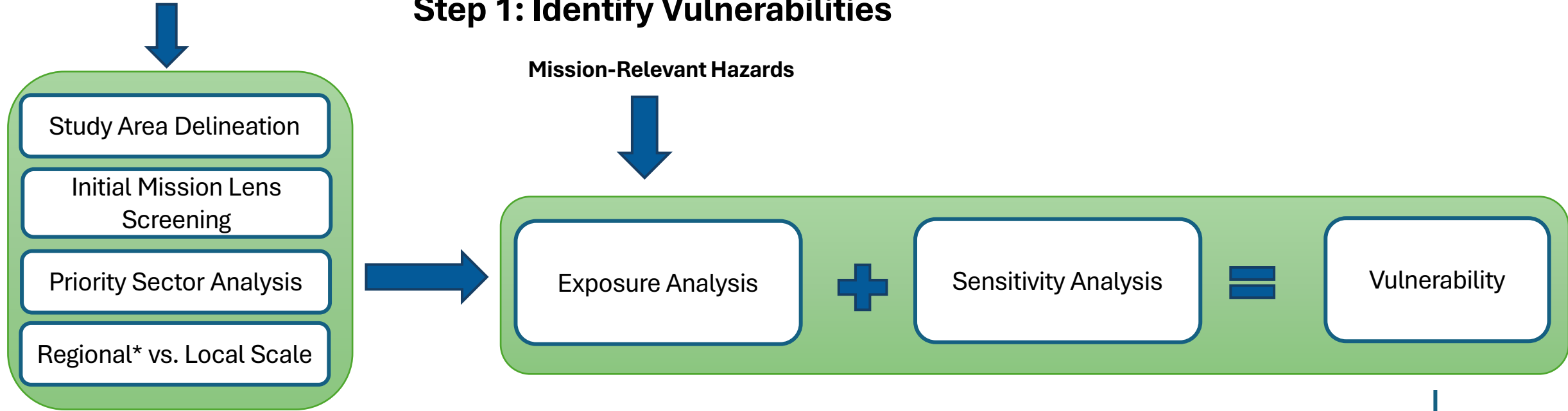


# Framework for Assessing Asset Vulnerability

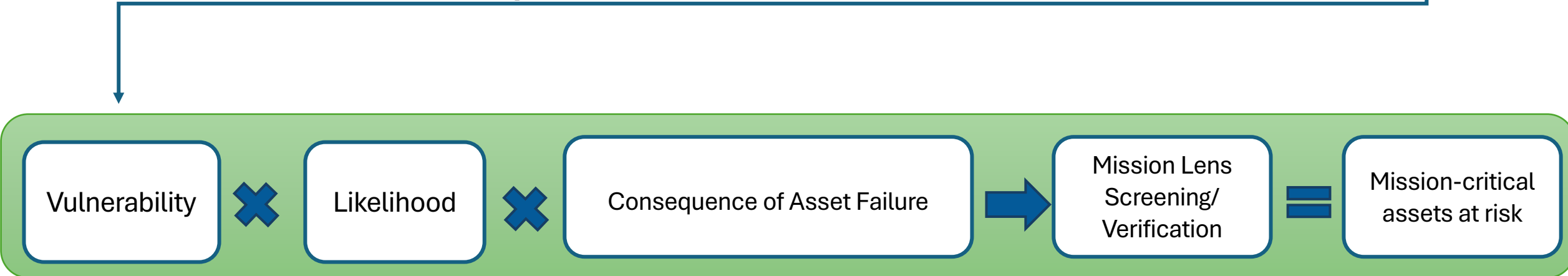
Assets

## Step 1: Identify Vulnerabilities

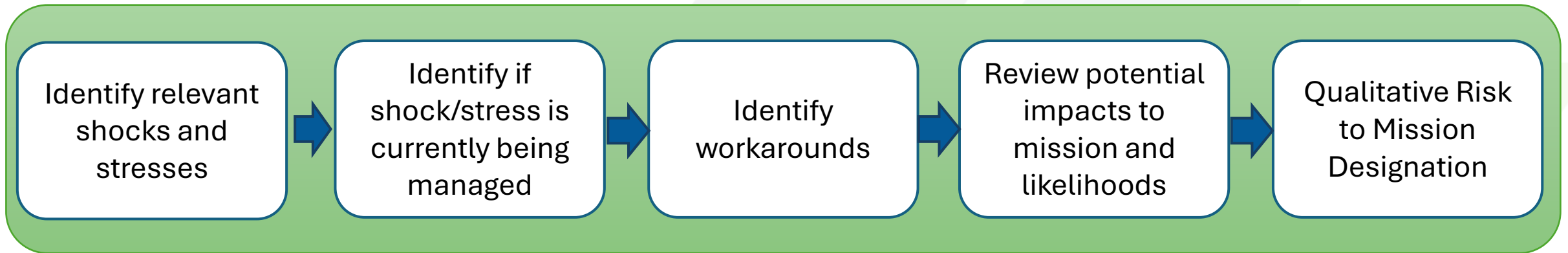
Mission-Relevant Hazards



## Step 2: Calculate Risk for Mission-Critical Assets



# MIRR Vulnerability Assessment Methodology – Qualitative Review



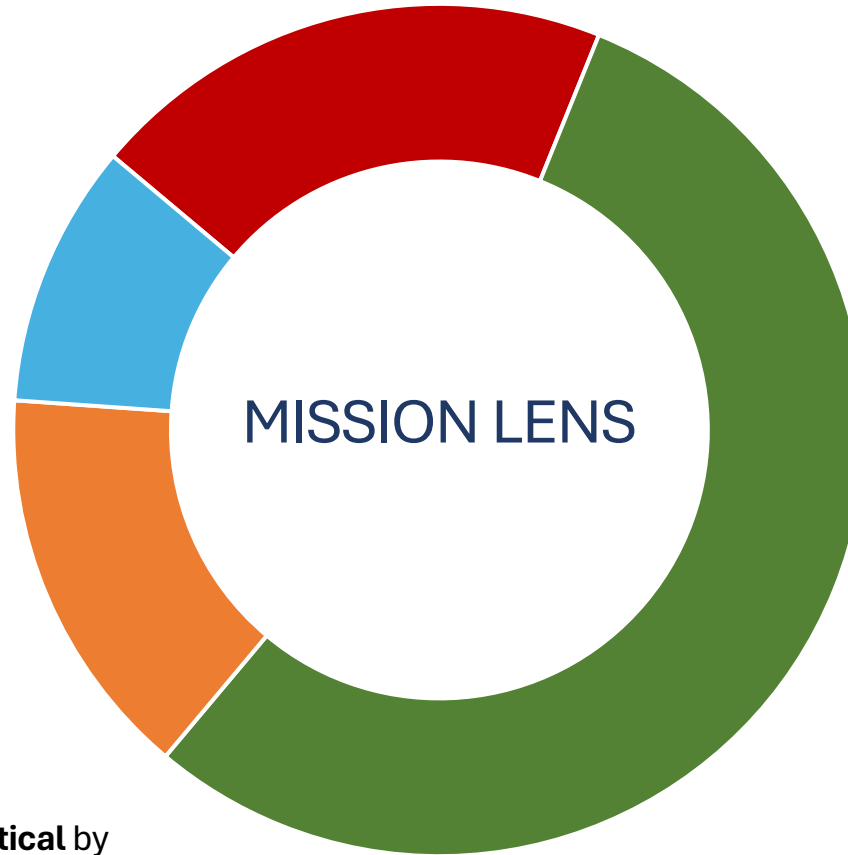
# Mission-Critical Lens – Assets - Definitions

## PRIMARY MISSION-CRITICAL ASSETS

- **Directly support the installation's primary mission**  
(failure/outage/disruption causes unacceptable disruption to mission operations)
- Specifically identified as **mission-critical** by installation
- Custom to each installation
- Local scale

## SECONDARY MISSION-CRITICAL ASSETS

- **Directly support the installation's secondary mission**  
(failure/outage/disruption causes unacceptable disruption to mission operations)
- Specifically identified as **mission-critical** by installation
- Custom to each installation
- Local scale



## MISSION-SUPPORTIVE ASSETS

- **Indirectly support the installation's missions** (failure/outage/disruption causes inconvenience to mission operations, but short-term workarounds keep operations going)
- Identified as supportive for high-performing operations by installation and community stakeholders
- Local or regional scale









## ADDITIONAL VULNERABILITIES

- Any additional vulnerabilities noted by stakeholders to natural, social, and economic infrastructure, or inside the fenceline

## ADJACENT INFRASTRUCTURE

- Not relevant to installation but within study area

# Threats and Hazards – Natural Hazards

Natural Hazards	
	<b>Rainfall Flooding</b> NEFRC, Resilient JAX +
	<b>Storm Surge</b> NOAA Office of Coastal Services Center +
	<b>Sea Level Rise</b> NOAA Office of Coastal Services Center +
	<b>Compound Flooding</b> NEFRC, Resilient JAX +
	<b>High Wind</b> FDEM, Florida Geographic Data Library +
	<b>Erosion</b> FDEP, USACE, SJRWMD, NOAA ●
	<b>Extreme Heat</b> Trust for Public Lands, USGS +
	<b>Wildfire</b> USDA +

+ Quantitatively assessed

● Qualitatively reviewed

⊘ Not analyzed or reviewed in MIRR VA

# Threats and Hazards – Other Shocks and Stresses

## Physical Infrastructure & Services



Increasing Demands on Infrastructure (Capacity)



Infrastructure Age

1

Lack of Redundancy



Transportation Congestion

## Encroachment



Light Pollution



Land Development



Airspace Congestion



T&E Species

## Personnel Stresses\*



Lack of Attainable Housing\*\*



Lack of Childcare\*\*



Regulatory Requirements



Drones (UAVs)



Lack of Funding for School Buses



Quantitatively assessed



Qualitatively reviewed



Not analyzed or reviewed in MIRR VA

*\*Per stakeholder feedback.*

*\*\*Acknowledged but not analyzed - solutions will be reviewed and discussed in adaptation phase.*

# Vulnerability Assessment Overview



# Categories of VA Results or VA Definitions



## Vulnerability:

*the combination of exposure and sensitivity that provides an understanding of the extent to which a hazard can disrupt an asset*

**Low = 1**

**Moderately Low = 2**

**Moderate = 3**

**Moderately High = 4**

**High = 5**

## Risk to mission:

The potential of an asset or system to impact the mission of an installation

**Low** = Asset failure/disruption has little to no impact on mission.

**Moderate** = Asset failure/disruption has moderate potential to inhibit mission.

**High** = Asset failure/ disruption has high potential to prevent execution of mission.

## Level of Urgency:

Describes how soon the risk must be addressed

Category	Duration	Years
<b>Immediate</b>	Present Day (0-5 years)	2026-2030
<b>Near-Term</b>	> 5 to < 10 years	2030-2035
<b>Mid-Term</b>	<10 to >25 years	2035 - 2050
<b>Long-Term</b>	>25 years	2050 and beyond

# Bottom Line Up Front

At the asset systems level there is *no immediate risk to mission* other than to address select single points of failure at each installation. This allows community service providers the ability to begin to integrate resilience risk reduction planning and incremental adaptation over time through the capital planning and budget process.

At the more granular scale (at the base level) the VA results indicate several critical assets with moderate to high risk to mission:



Asset Type	Assets	Shocks/Stresses	Risk to Mission	Level of Urgency
Roadways/Bridges and Approaches	A1A, Heckscher Drive, Roosevelt Blvd (US-17)	Storm surge, aging infrastructure	Moderate to High	Immediate to Mid-term
Railways	Railways at/near Camp Blanding and Blount Island	Extreme heat, storm surge, lack of redundancy	Moderate	Near-term
Electric Production and Supply Facilities	NAS JAX substation, Camp Blanding JTF substation, MCSF Blount Island electrical supply	rainfall flooding, storm surge, SLR, wildfire, lack of redundancy	Moderate to High	Immediate
Wastewater Systems	Camp Blanding JTF, NAS JAX	Lack of redundancy, regulatory requirements	Moderate	Near-term
Shorelines	MCSF Blount Island shorelines, shorelines around A1A and east of Mayport	Erosion, storm surge, SLR	Moderate to High	Immediate to near-term

*These will be the prioritized for the next phase of developing adaptation strategies and projects.*



# VA Results – Vulnerability by Asset Type

Asset Type	Vulnerability	Description
Bridges and Approaches	Low – Moderate	Vulnerability to flooding from extreme rain, surge, and/or SLR.
Roads	Low – Moderately High	Vulnerability to extreme flood events. Transportation congestion and lack of redundancy is a significant stressor.
Electric Production and Supply Facilities	Low – Moderately High	Varying vulnerability to flood hazards and/or wildfire. Lack of redundancy is another stressor.
Natural Gas	Low – Moderately Low	Minimal risk for large diameter natural gas transmission lines.
Potable Water Systems	Low – Moderately Low	
Wastewater Systems	Low – Moderately Low	Lack of redundancy and external regulatory pressures are future stresses for wastewater systems.

# VA Results – Vulnerability by Asset Type

Asset Class	Vulnerability	Description
Railways	<b>Moderately Low – High</b>	Railways are vulnerable to flooding and fire. Select railways are also old and/or lack redundancy.
Shorelines	<b>Moderately Low – Moderately High</b>	Select shorelines are vulnerable to extreme rainfall/surge/compound flood events.
Conservation lands	<b>Moderately Low – Moderately High</b>	Conservation lands have varying degrees of vulnerability to flooding and wildfire.
Wetlands	<b>Low – Moderately Low</b>	Coastal wetlands are vulnerable to SLR.
Hospitals	<b>Low – Moderate</b>	Select coastal hospitals are vulnerable to multiple flood hazards.
Fire Stations	<b>Low – Moderate</b>	
Law Enforcement Facilities	<b>Low – Moderate</b>	Select facilities are vulnerable to multiple coastal flood hazards.

# Naval Station Mayport



# Naval Station Mayport: Mission Critical Assets

## Primary

House and support the 4<sup>th</sup> Fleet, maintain and house UAVs, manages fuel depots, homeland defense (non-international terrorism), repair major ships.

### Location-Specific Positioning

- St. John's River
- Wetlands and Marshes
- Shorelines
- Fuel Depot

### Assets Providing Direct Support

- Electric Production and Supply Facilities
- Roads and Bridges
- Communications Facilities (e.g., cell towers, fiberoptic lines)
- Water utility supply facilities
- Wastewater conveyance and treatment facilities
- Safe Harbor Facilities (JAXPort)
- Offsite dry dock facilities (BAE)

## Secondary

Offer regional fueling depot.

### Assets Providing Direct Support

- Emergency Response Facilities
- Shorelines (Atlantic Coast shorelines)
- Fire Stations

## Mission-Supportive

Assets that support the livelihood and health of installation personnel, indirect support to primary and secondary missions.

### Personnel Support

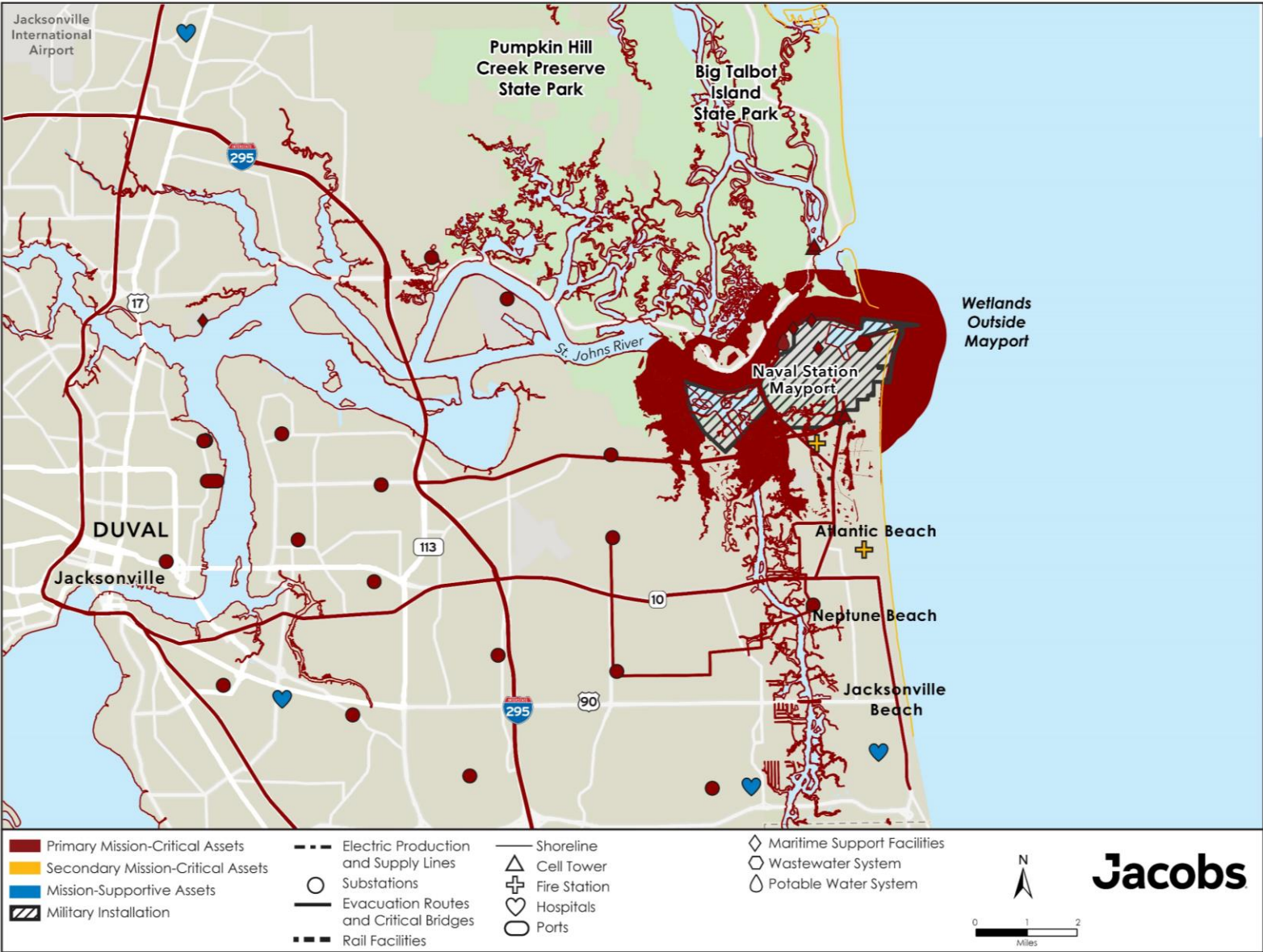
- Affordable Housing
- Childcare Facilities
- Emergency Response Facilities (Hospitals)

### Assets Providing Indirect Support

- Solid and Hazardous Waste Facilities



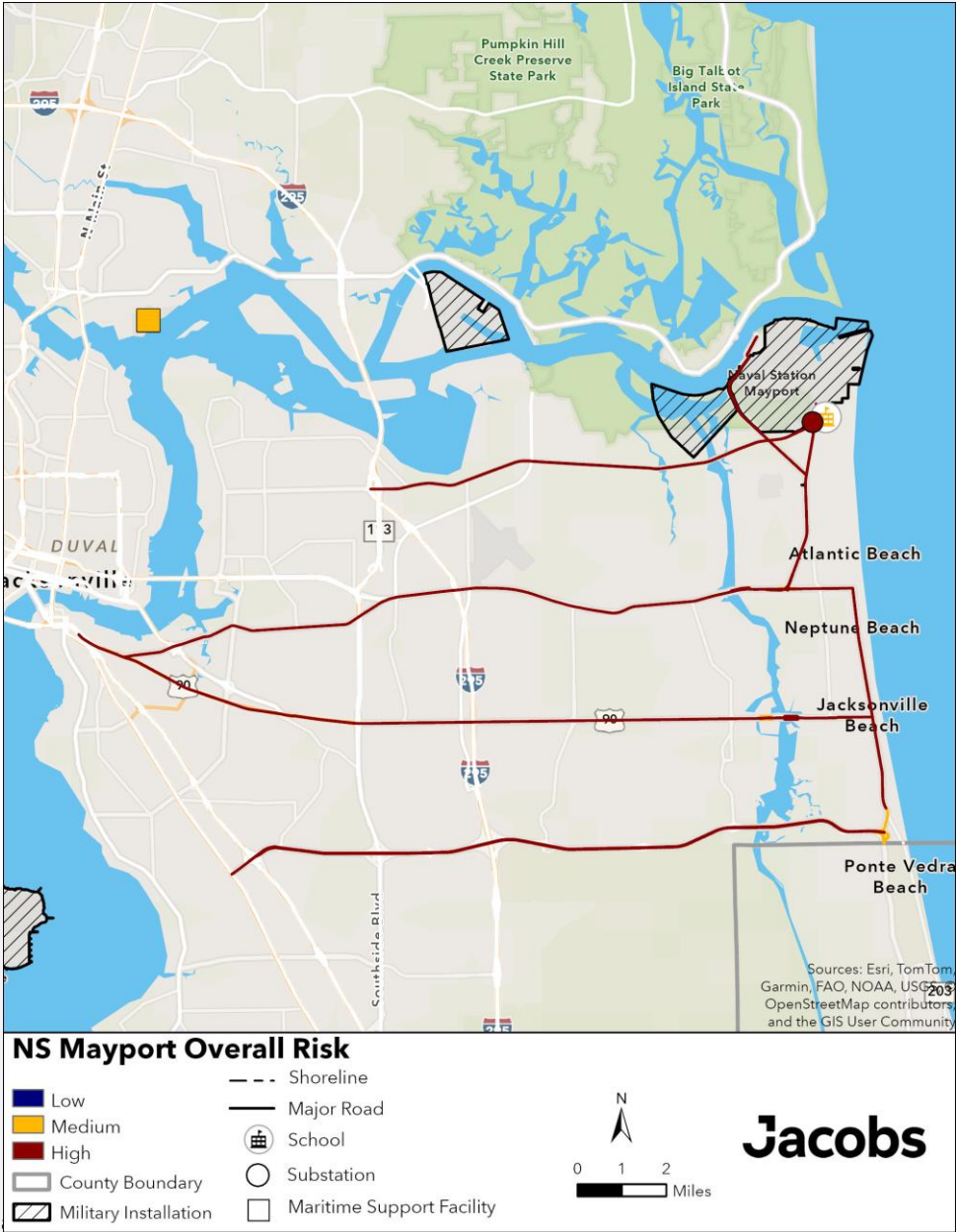
# NS Mayport: Mission Critical Assets



# NS Mayport: Risks to Mission

Asset Type and Name	Asset Owner	Extent	Mission-Criticality	Relevant Shocks/Stresses	Risk to Mission	Level of Urgency
A1A	FDOT	Wonderwood Dr to Village of Mayport	Primary	SLR, Erosion, Surge	High	Immediate
Shorelines	Various	East of installation, Atlantic shorelines	Primary	SLR, erosion, storm surge	High	Immediate
Electric Supply Facility	JEA	Mayport Substation; South of base	Primary	Storm surge, Rainfall flooding	High	Immediate
Mayport Rd	FDOT / Atlantic Beach	Wonderwood Dr to installation gate	Primary	Rainfall flooding	Medium	Near-Term
McCormick Rd / Wonderwood	FDOT	Bridge approach at Greenfield Creek	Primary	Storm surge	Medium	Near-Term
Regional Roadways	Various	State Rd 10, Atlantic Blvd, US-90, JT Butler Blvd, 3 <sup>rd</sup> St S, Beach Blvd, Dune Ave	Primary	Storm surge, Rainfall flooding, SLR, Compound flooding	Medium	Near-Term
School: Anchor Academy Elementary	Duval County Public Schools	Anchor Academy school grounds	Supportive	School closure, Storm surge	Medium	Near-term
Northside Fuel Depot	Naval Supply Logistics Command	West of installation in industrial park	Primary	Storm surge, Rainfall, Compound	Medium	Near-term
Conservation Lands	DOI	Timuquana Preserve	Primary	SLR	Medium	Mid-Term

# NS Mayport: Risks to Mission



# **Marine Corps Support Facility Blount Island**



# MCSF Blount Island: Mission-Critical Assets At-a-Glance

## Primary

**Martime Prepositioning Force, Logistics & Sustainment, and Sealift Integration**

### Location-Specific Positioning

- Rivers (St. John's River)
- Shorelines

### Assets Providing Direct Support

- Electric Production and Supply Facilities
- Roads and Bridges
- Railway systems
- Communications systems
- Ports (JAXPort)
- Fire Stations
- Tugboats and harbor pilots
- Fuel Depot
- Offsite dry dock facilities - The local dry dock facilities are private contracting companies

## Secondary

**Joint Logistics Hub, Exercise & Deployment Support, and Vessel Maintenance**

### Assets Providing Direct Support

- Water systems
- Wastewater systems

## Mission-Supportive

**Assets that support the livelihood and health of installation personnel, indirect support to primary and secondary missions.**

### Personnel Support

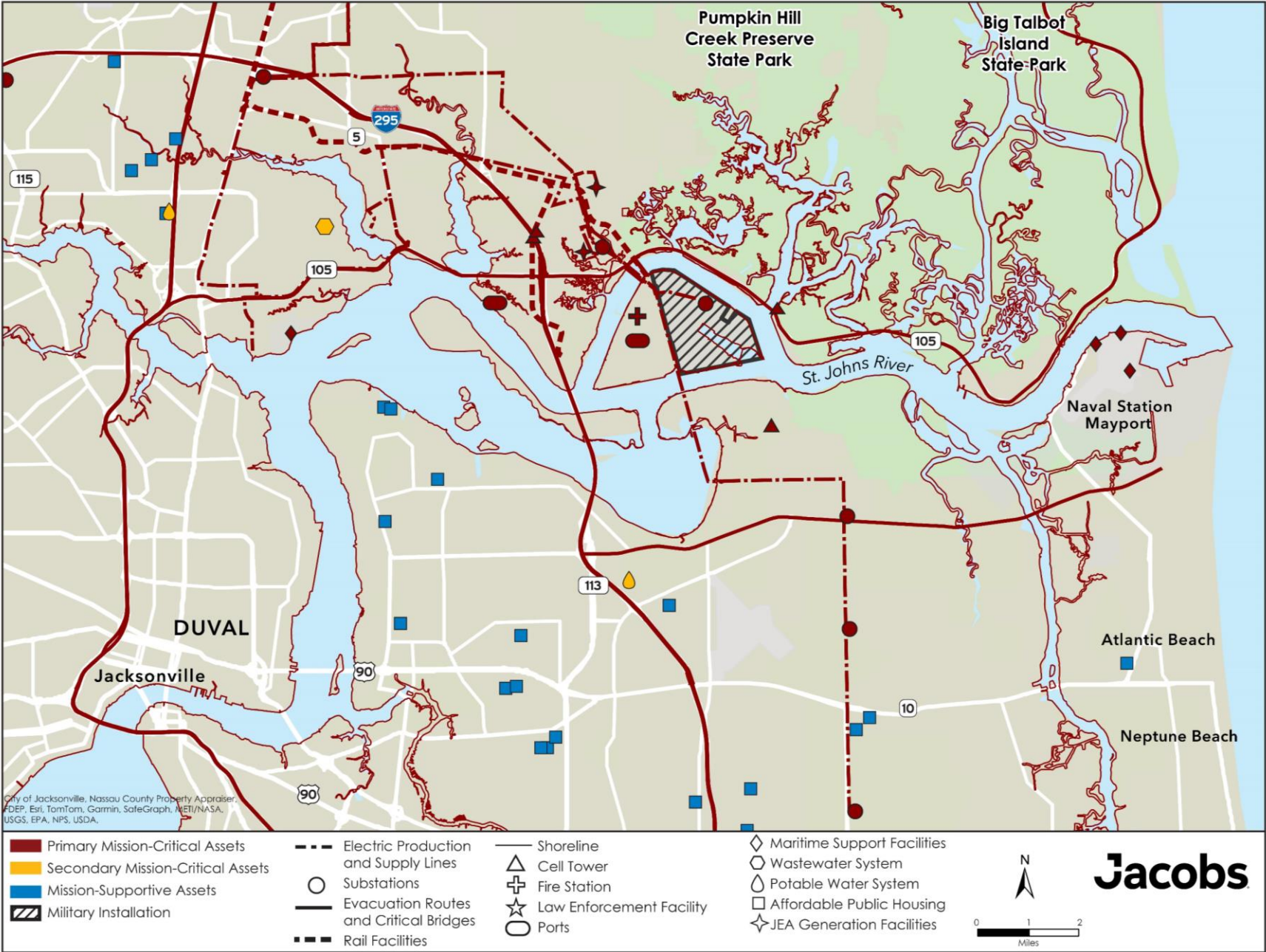
- Affordable Housing
- Childcare Facilities

### Assets Providing Indirect Support

- Solid and Hazardous Waste Facilities



# MCSF Blount Island: Mission Critical Assets



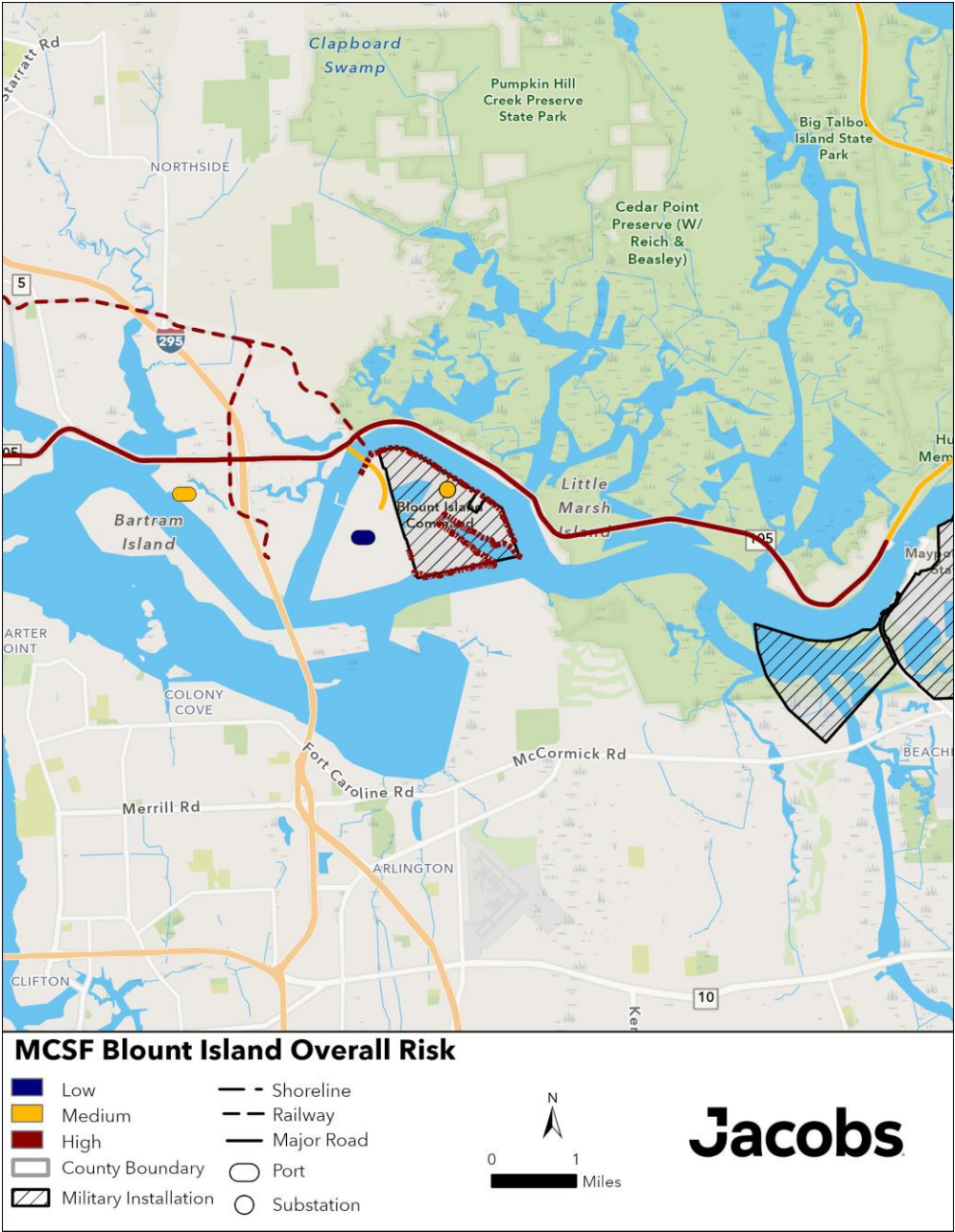
# MCSF Blount Island: Risks to Mission - Quantitative

Asset Type and Name	Asset Owner	Extent	Mission-Criticality	Relevant Shocks/Stresses	Risk to Mission	Level of Urgency
Shorelines	TBD	Around installation	Primary	SLR, Erosion, Storm surge	High	Immediate
Heckscher Drive	FDOT	295 to Dave Rawls Blvd	Primary	Surge, SLR, Congestion, Lack of redundancy	High	Near-term
Blount Island Blvd	JAXPORT	Heckscher to Blount Island	Primary	TBA	TBA	TBA
Dave Rawls Blvd	JAXPORT	Heckscher Dr to Blount Island	Primary	Storm surge, aging infrastructure, Lack of redundancy (weight restrictions)	High	Near-term
Electric supply	JEA	Substation	Primary	Storm surge, Lack of redundancy	Medium	Immediate
Blount Island Terminal	JAXPORT	West of installation	Primary		Low	Long-term
Dames Point Terminal	JAXPORT	West of installation	Primary	TBA	TBA	TBA

# MCSF Blount Island: Risks to Mission - Qualitative

Asset Type and Name	Asset Owner	Extent	Mission-Criticality	Relevant Shocks/Stresses	Risk to Mission	Level of Urgency
Railways/ Railroad Bridge	JAXPORT	Railways supplying the base.	Primary	Lack of redundancy	High	Near-term
Potable Water Systems	JEA	Water supply line from mainland to base	Secondary	Lack of redundancy	Medium	Near-term
Communicati ons Lines	AT&T	TBD	Primary	Lack of redundancy	High	Immediate

# MCSF Blount Island: Risks to Mission



# Camp Blanding Joint Training Facility



# Camp Blanding JTF: Mission-Critical Assets

## Primary

Support live weapons and maneuver training ranges and house the FL National Guard Training Center and other interagency efforts.

### Location-Specific Positioning

- Conservation lands

### Assets Providing Direct Support

- Electric Production and Supply Facilities
- Roads and Bridges
- Railway systems
- Communications systems
- Fire stations
- Police stations
- Stormwater systems
- Clay County EOC

## Secondary

Support various state and federal activities, including disaster response and various trainings.

### Assets Providing Direct Support

- Water systems
- Wastewater systems

## Mission-Supportive

Assets that support the livelihood and health of installation personnel, indirect support to primary and secondary missions.

### Personnel Support

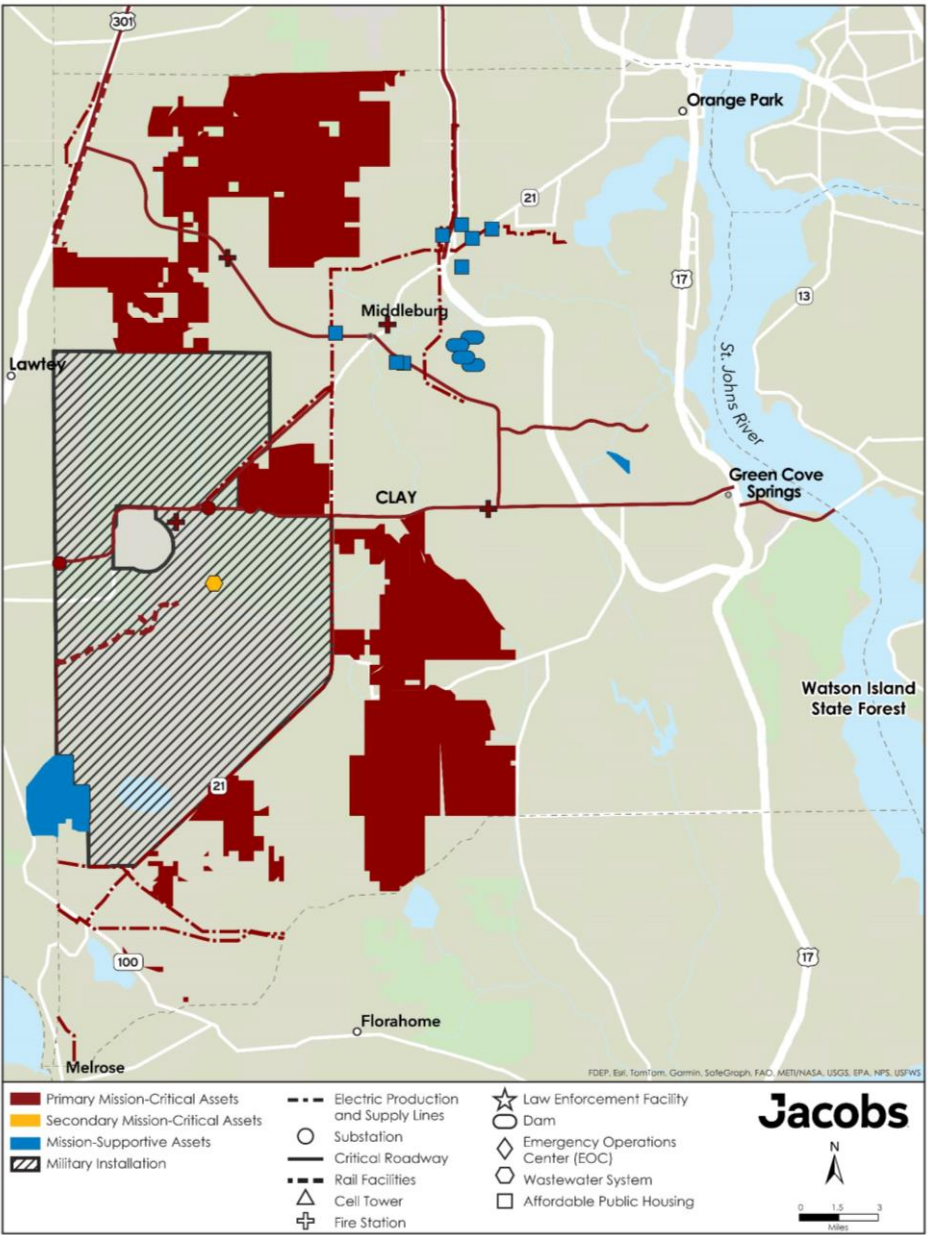
- Affordable Housing
- Childcare Facilities

### Assets Providing Indirect Support

- Solid and Hazardous Waste Facilities



# Camp Blanding JTF: Mission Critical Assets



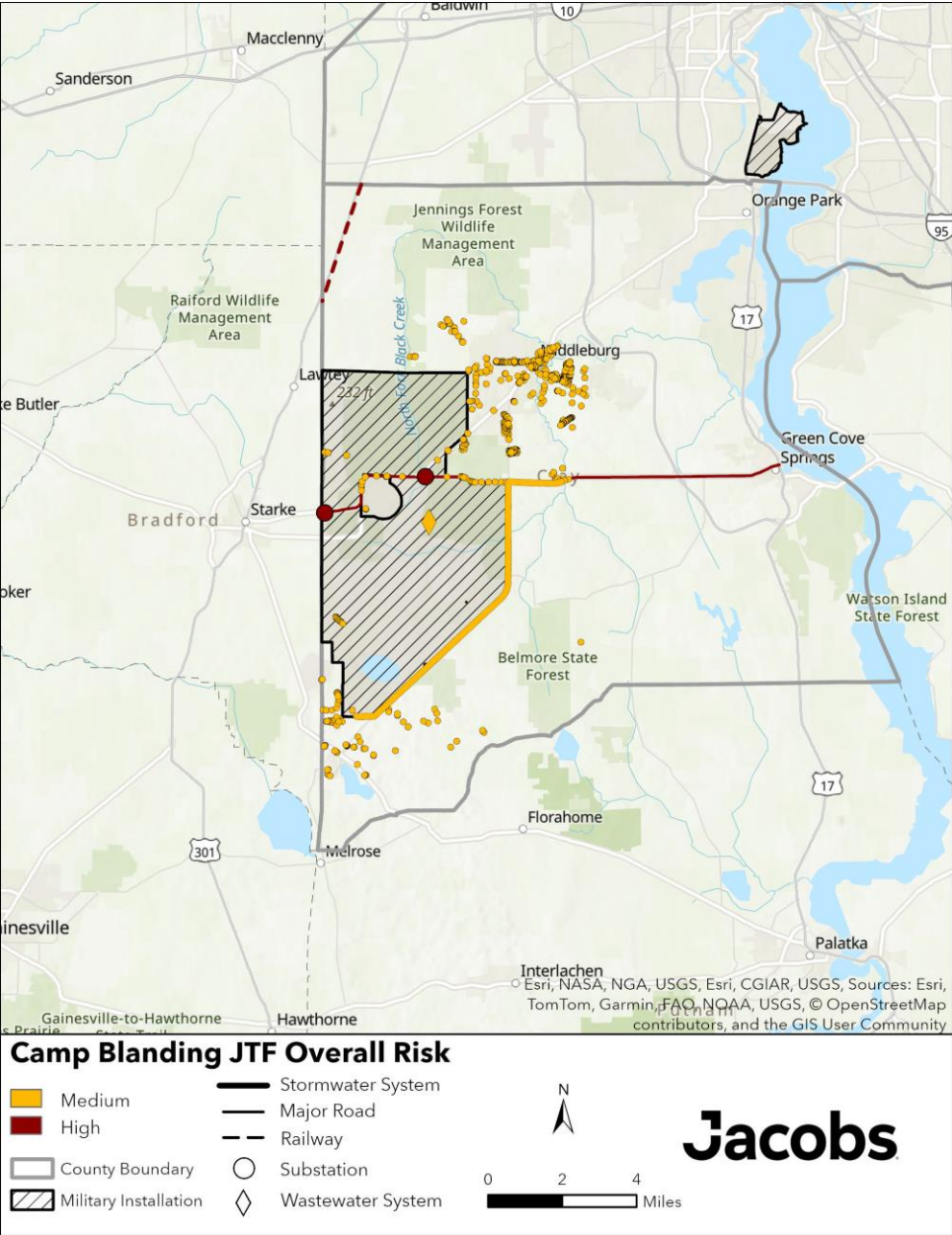
# Camp Blanding JTF: Risks to Mission (Quantitative)

Asset Type and Name	Asset Owner	Extent	Mission-Criticality	Relevant Shocks/Stresses	Risk to Mission	Level of Urgency
Electric Facilities: Substation	FPL	North of base	Primary	Lack of redundancy, wildfire	High	Near-term
Railways	CSX	Surrounding Installation	Primary	Rainfall flooding, extreme heat	High	Near-term
Stormwater Systems	Various	Areas around base	Primary	Rainfall flooding	Medium*	Near to Mid-term
State Road 16	FDOT	Between 225 and 215 near entrance gate	Primary	Single point of failure, Rainfall flooding	Medium*	Near-term

# Camp Blanding JTF: Risks to Mission (Qualitative)

Asset Type and Name	Asset Owner	Extent	Mission-Criticality	Relevant Shocks/Stresses	Risk to Mission	Level of Urgency
Conservation Lands/ Parcels Surrounding Installation Boundary	Various	Installation Boundary	Primary	Encroachment (development pressures), Wildfire	High	Near to Long-term
Wastewater System	N/A	N/A	Secondary	Lack of redundancy/ interconnection with other systems, regulatory requirements	Medium	Near-term

# Camp Blanding JTF: Risks to Mission



# Naval Air Station Jacksonville



# NAS Jacksonville: Mission-Critical Assets

## Primary

Conduct training and operations  
Logistical and maintenance support

### Location-Specific Positioning

- Conservation lands
- Shorelines

### Assets Providing Direct Support

- Electric Production and Supply Facilities
- Roads and Bridges
- Railway systems
- Cecil Airfield
- Airspace
- Natural gas supply systems
- Regional fire stations

## Secondary

Drone operations, Naval Hospital, Support  
regional commands, community and homeland  
defense

### Assets Providing Direct Support

- Water systems
- Wastewater systems
- Communications systems
- Regional hospitals

## Mission-Supportive

Assets that support the livelihood and health  
of installation personnel, indirect support to  
primary and secondary missions.

### Personnel Support

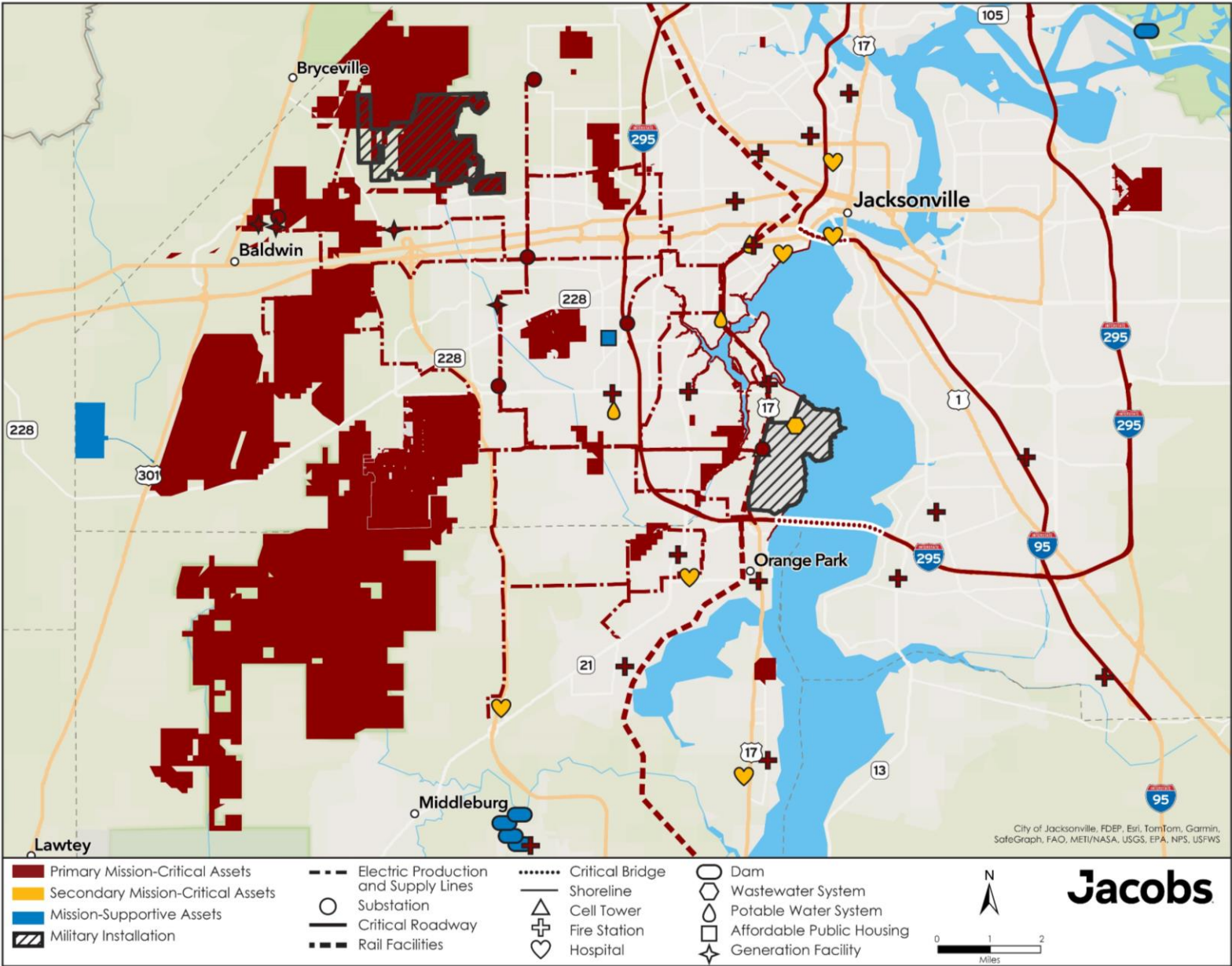
- Affordable housing
- Childcare facilities

### Assets Providing Indirect Support

- Solid and Hazardous Waste Facilities
- Stormwater systems



# NAS JAX: Mission Critical Assets



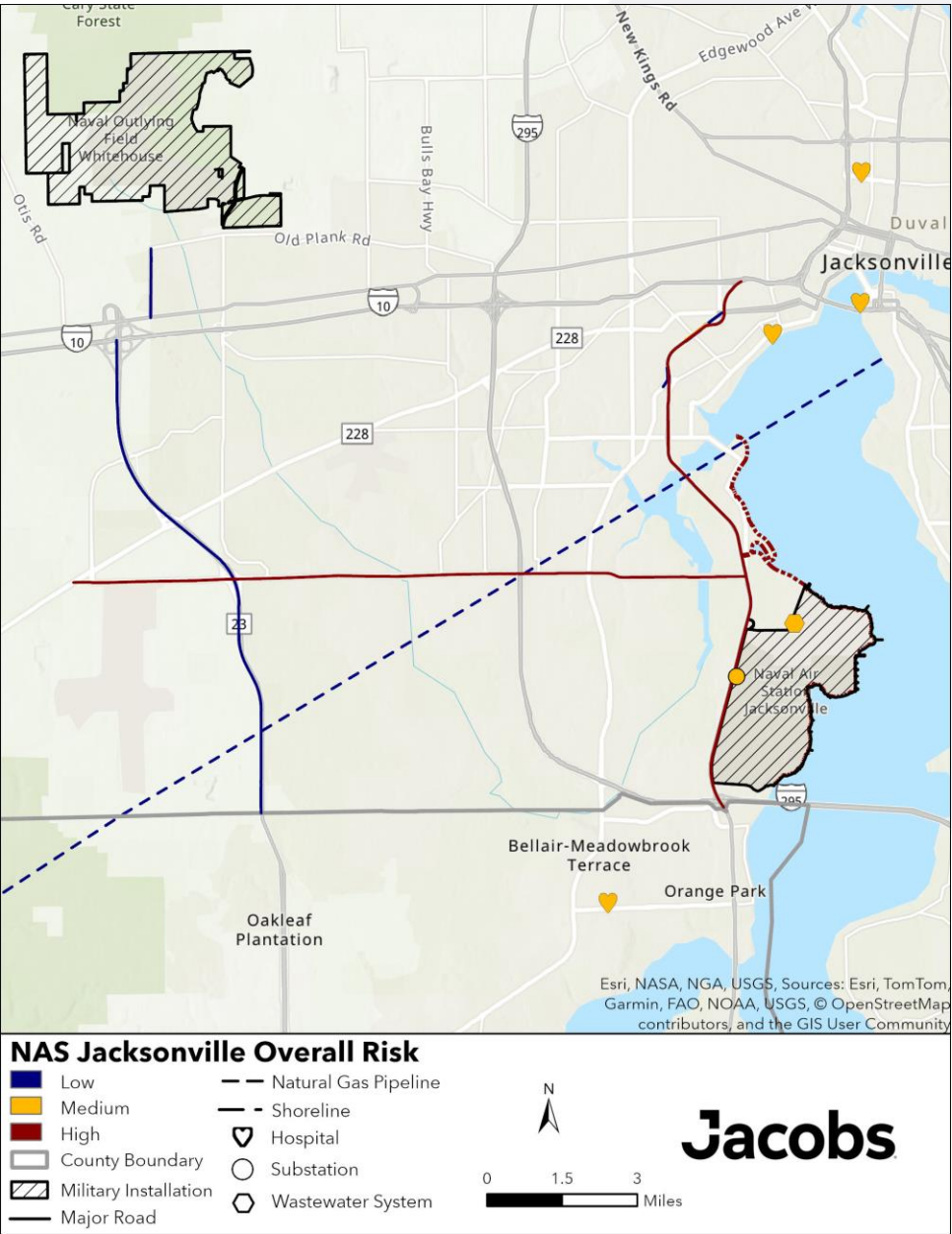
# NAS JAX: Risks to Mission (Quantitative)

Asset Type and Name	Asset Owner	Extent	Mission-Criticality	Relevant Shocks/Stresses	Risk to Mission	Level of Urgency
Roosevelt Blvd	FDOT	West of base	Primary	Congestion, lack of redundancy	High	Immediate
103 <sup>rd</sup> St / Timuquana Rd	FDOT	Access to Whitehouse	Primary	Rainfall flooding, SLR	Medium	Near-term
Regional Hospitals	Various	Regional	Secondary	Rainfall flooding, Storm surge, Compound Flooding, Wildfire	Low-Medium	Near-term - Long-term
Halsema Rd	County	Access to Whitehouse front gate	Primary	N/A	Low	Long-term
Natural Gas	Florida Gas, Southern Natural Gas	Regional	Primary	N/A	Low	Long-term

# NAS JAX: Risks to Mission (Qualitative)

Asset Type and Name	Asset Owner	Extent	Mission-Criticality	Relevant Shocks/Stresses	Risk to Mission	Level of Urgency
NOLF Whitehouse	Various	Installation Boundary	Primary	Encroachment (development pressures), Wildfire	High	Immediate
Electric Substation	JEA	North of base	Primary	Lack of redundancy	Medium	Immediate
Wastewater System	N/A	N/A	Secondary	Lack of redundancy, regulatory requirements	Medium	Near-term
Buckman Bridge and Roosevelt / 295 Interchange	FDOT	Entire bridge and interchange	Primary	Congestion	Medium	Near-term

# NAS JAX: Risks to Mission



# Regional Risks to Mission



# Regional: Risk to Mission

- Lack of Childcare\*
- Lack of Affordable Housing\*
- Regulatory / Policy Pressures

*\*was not analyzed qualitatively or quantitatively but was an issue discussed in stakeholder engagement workshops.*

*\*\*these items will be addressed at a regional scale in adaptation.*

# Next Steps & Questions



# Next Steps & Questions

- Feedback and Comments
- Next Steering Committee Meeting – April 2026
- Mutual Support Agreements / Community Partnerships
- Adaptation Strategy Kickoff
- Emergency Management Exercise – May 2026





Northeast Florida Regional Council  
Military Installation Resilience Review

# Thank You



Comments / Feedback please email:  
[Tanya.Gallagher@Jacobs.com](mailto:Tanya.Gallagher@Jacobs.com)  
[Alec.Rodriguez@Jacobs.com](mailto:Alec.Rodriguez@Jacobs.com)

**Jacobs**